



**GEF 8 Reimagining National Parks for People and Nature – Mega Living Landscapes Project (GEF ID: 11347)**

**Section D: Stakeholder Engagement Plan**

## Table of Contents

1. Introduction .....	3
<b>Project strategies, outcomes and outputs .....</b>	<b>4</b>
<b>Project Component 1: Creating MLL Sustainable Institutional Mechanisms &amp; Governance Structures. ....</b>	<b>5</b>
<b>Project Component 2: Fostering and enhancing sustainable economic opportunities &amp; socio - economic empowerment.....</b>	<b>5</b>
<b>Project Component 3: Building capable conservation management institutions, community of practices &amp; improving conservation capacity and skills.....</b>	<b>6</b>
<b>Project Component 4. Monitoring and Evaluation .....</b>	<b>6</b>
2. Regulations and Requirements .....	6
<b>The Constitution of the Republic of South Africa Act No. 108 of 1996 .....</b>	<b>6</b>
<b>National Environmental Management Act No. 107 of 1998 (NEMA) .....</b>	<b>7</b>
<b>National Environmental Management: Protected Areas Act 57 of 2003 - NEMPAA .....</b>	<b>7</b>
<b>National Environmental Management: Biodiversity Act, 10 of 2004 - NEMBA .....</b>	<b>7</b>
3. Project Stakeholders.....	8
4. Summary of any previous stakeholder engagement activities .....	19
5. Stakeholder Engagement Plan.....	21
6. Resources and Responsibilities.....	25
7. Grievances Mechanism.....	25
8. Monitoring and Reporting .....	29
Appendix 1: Stakeholder Analysis.....	30
Appendix 2: Systematic Documentation of Stakeholder Consultations .....	39

## 1. Introduction

South Africa (SA) is one of the 17 megadiverse countries, hosts most of the world's biodiversity and has large numbers of species found nowhere else. Yet, South Africa's pathway to sustainable development is still fraught with challenges. The country faces triple environmental threats, including biodiversity loss, impacts of climate change, and pollution.

Despite SA's commitment to protecting and conserving biodiversity and reducing the impacts of climate change, there is a significant gap between its desire to achieve 30 x 30, and the current quantum of land under some form of conservation.

The recent approval of the White Paper on Conservation and Sustainable Use of SA's Biodiversity, the launch of the Biodiversity Economy Strategy and SANParks' Vision 2040 herald in the beginning of a paradigm shift that will enable the country to change from its current trajectory to one where nature is understood to be the bedrock of the economy.

The *GEF 8 Reimagining National Parks for People and Nature – Mega Living Landscapes Project*, which serves as a key implementation mechanism for SANParks' Vision 2040, will assist in breaking barriers blocking both the expansion of protected areas and pro-nature economic development that benefits local communities. It will create three Mega Living Landscapes (MLL) that contribute to the realisation of a dynamic reimagined national conservation vision for South Africa that will become an integral part of the country's sustainable development and nature positive economic future resulting in thriving people and nature. In these MLLs the GEF project will, within six years, bring 2 million hectares of land under conservation – 1,297,175 hectares being added to the Protected Area (PA) estate or being under improved management within PAs, and 630,300 hectares of landscapes outside declared PAs will be under improved land management in production systems, thereby contributing to Global Environment Benefits.

The GEF funded project will focus on a project area within three proposed MLLs where synergies exist with government's National Development Plan (NDP) and where existing protected areas and initiatives can be built on to create MLLs. These areas are a) the Greater Addo stretching from the coastal town of Gqeberha (formerly Port Elizabeth) from the Addo National Park (and its adjacent marine protected area) inland to join up with the Mountain Zebra National Park near the town of Craddock and the Camdeboo National Park surrounding the town of Graaff Reinet, all in the Eastern Cape Province; b) Greater Kruger (Barberton/Makhonjwa) which stretches from near the town of Barberton to south of the Kruger National Park in the Mpumalanga Province; and c) the Eastern Grasslands which will include the formal declaration of the Grasslands National Park in the Eastern Cape highlands. Due to the wide scope of the three MLLs, this GEF project will implement all project outputs in only one, namely Addo, and select project outputs in Barberton and Eastern Grasslands. Figure 1 below shows the location of the three MLLs:

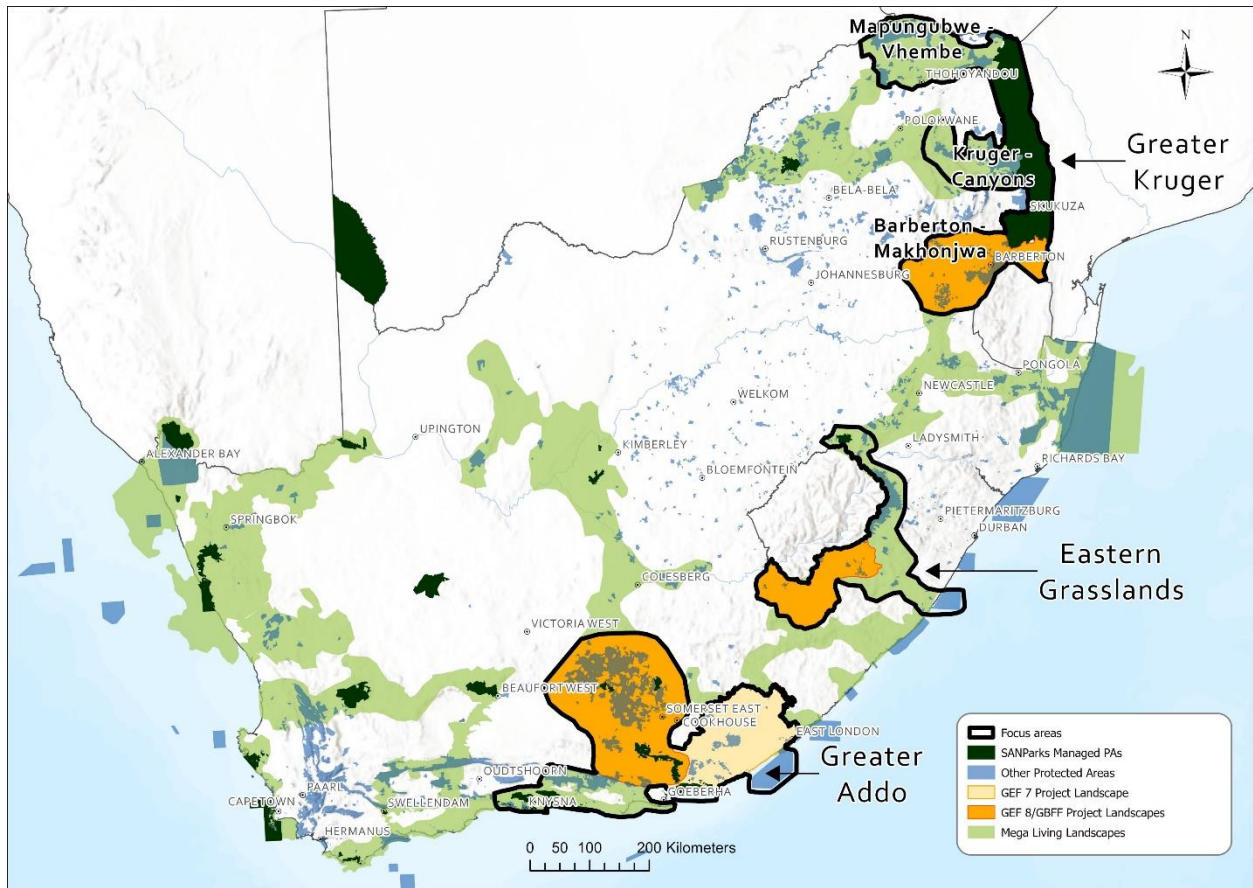


Figure 1: Location of the three MLLs

Stewardship mechanisms, and compatible land use interventions where landowners and communal land rights holders are active participants, will characterise the way in which these mega living landscapes will be created. Lessons from the successful implementation of these three MLLs will be used in a further five MLLs, aiming to double the 4.6m hectares of land that SANParks is currently responsible for protecting.

The long-term impact of the project will be well-connected functioning ecosystems that result in thriving biodiversity, and increased livelihoods, human well-being, and resilience in three MLLs.

### Project strategies, outcomes and outputs

The high-level theory of change of this project is that through the creation of MLLs, the project will demonstrate that the historic conservation mindset of separating people and nature and their culture (at that time included as an apartheid overlay of excluding the black population), is no longer the optimal way to establish PAs. Through protection of key ecosystem services within the MLLs (such as water sources which demonstrate a direct link to benefiting people), without excluding all human activities (such as sustainable rangeland activities), and through innovative stewardship approaches that retain private landowners and communal land users on the land while conserving biodiversity, MLLs will demonstrate the critical importance of the biodiversity economy in SA and the benefits this can realise for both the private sector and local communities. This will contribute to increased understanding of the value of biodiversity and development of a pro-nature-and-people narrative. The project will also demonstrate that climate change impacts can be mitigated through the creation of large continuous corridors that allow for species migration and adaption.

The project will lay the seeds to demonstrate, in the long term, that well-connected functioning ecosystems result in thriving biodiversity; and that the livelihoods, well-being, and resilience of the local communities living within them is increased. This will contribute to the realisation of a dynamic reimagined national conservation vision for South Africa that will become an integral part of the country's sustainable development and nature positive economic future.

This section explains the Theory of Change, highlighting the Strategic Components and associated Project Outcomes:

**Project Component 1: 1.Creating sustainable MLL institutional mechanisms and governance structures.**

Interventions under this component are intended to demonstrate substantial progress in creating sustainable institutional mechanisms, such as establishing the MLL Hubs and governance structures for MLLs by the end of the project. Collectively, these efforts will enhance institutional operational capacity, promote strong governance practices, empower local leadership, and ensure the sustainability of MLL institutions, contributing to the region's overall socio-economic and environmental well-being. Component 1 has two Outcomes indicated below:

**Outcome 1.1** MLLs established through inclusive institutional and governance structures (MLL Hubs), vision and planning frameworks.

**Outcome 1.2** Capabilities of SANParks, MLL governance members and management teams, local community leadership increased for effective management of MLL.

**Project Component 2: Fostering and enhancing sustainable economic opportunities & socio-economic empowerment.**

This component aims to drive substantial economic growth and socio-economic inclusion in the regions where the three Mega Living Landscapes (MLLs) are located. The focus is on significantly enhancing household incomes and increasing the contributions of MLL-based enterprises to local economies, which will improve local economic indicators. This component also prioritises reducing unemployment rates among women and youth, promoting their economic independence and improving livelihoods.

Sustainable livelihood practices are championed, ensuring that 80% of supported enterprises adopt sustainable production and resource management methods, leading to a noteworthy increase in sustainable certification of products and services. Empowering women and youth through leadership roles and enhancing their decision-making capacities within local enterprises is a critical outcome, with 50% of businesses led or co-led by women and youth by 2030.

Furthermore, this component focuses on improving access to finance and markets, enabling MLL-linked products and services to achieve significant market penetration. By facilitating trade agreements and opening access to multiple external markets, implementing this project component ensures that sustainable products from MLLs gain broader recognition and market share. Collectively, these efforts contribute to the overarching goal of socio-economic empowerment and sustainable development in the MLL regions, driving transformative change and long-term prosperity. Component 2 has one Outcome indicated below:

**Outcome 2.1** Increased biodiversity-positive sustainable socio-economic empowerment and development, owned by local stakeholders and benefiting local communities in the 3 MLLs.

### **Project Component 3: Improving Inclusive Conservation in the MLLs.**

This component focuses on strengthening conservation management institutions and enhancing conservation practices across the three Mega-Living Landscapes (MLLs). The desired outcomes include establishing capable and well-resourced institutions that can effectively manage MLL activities and partnerships. This component aims to establish one formal conservation partnership in each MLL and secure significant conservation program funding. The goal is to increase funding for conservation programs in the MLLs, with at least a 5% growth year on year in external financing secured or committed by 2030. This will ensure the timely and budget-compliant implementation of initiatives. The project seeks to reverse biodiversity degradation by securing approximately 2 million hectares of land under conservation across the three MLLs, improving key biodiversity indicators, and enhancing ecosystem connectivity. Component 3 has one Outcomes indicated below:

**Outcome 3.1:** Increased area of PAs newly created, and area of existing PAs with improved effective management, delivered through a new inclusive and collaborative conservation model in the 3 MLLs.

### **Project Component 4. Monitoring and Evaluation**

**Outcome 4.1** Effective, informed, and adaptive project management.

Project Component 4 emphasises Monitoring & Evaluation (M&E) to ensure effective, informed, and adaptive project management. The primary outcome, Outcome 4.1, aims to achieve effective, informed, and adaptive project management. The project will implement a robust gender responsive Monitoring and Evaluation plan that collects both gender and sex-disaggregated data with gender sensitive collection methods. All project-level reports will include information on the implementation of the gender action plan.

## **2. Regulations and Requirements**

The content presented here has been prepared for the GEF 8 *Reimagining National Parks for People and Nature – Mega Living Landscapes Project* with the purpose of guiding stakeholder engagement during planning, implementation and closure of the project. In this regard, the plan lays out standards, guidelines and concrete activities for the project to ensure transparency, inclusion, accountability, integrity, and effective participation of all affected parties.

### **Government of South Africa’s Policies and Regulations**

The following summarizes the legal policies and regulations pertaining to stakeholder engagement applicable to the project:

#### **The Constitution of the Republic of South Africa Act No. 108 of 1996**

The Bill of Rights included in the Constitution of the Republic of South Africa (“the Constitution”) indicates that, in terms of Section 24, the citizens of South Africa have the right to have the environment protected and to live in an environment that is not harmful to human health or well-being.

The Constitution further elaborates that everyone has the right (a) to an environment that is not harmful to their health or wellbeing; and (b) to have the environment protected, for the benefit of present and future generations, through reasonable legislative and other measures that— (i) prevent pollution and ecological degradation; (ii) promote conservation; and (iii) secure ecologically sustainable development and use of natural resources while promoting justifiable economic and social development.

### **National Environmental Management Act No. 107 of 1998 (NEMA)**

The National Environmental Management Act provides for “co-operative, environmental governance by establishing principles for decision-making on matters affecting the environment, institutions that will promote co-operative governance and procedures for coordinating environmental functions exercised by organs of state; and to provide for matters connected therewith”. The Act promotes the application of appropriate environmental management tools to ensure integrated environmental management of development activities. Furthermore, the Act as part of the integrated environmental management process, the public needs to be informed and its participation enabled, in all phases of the investigation and assessment of impact.

### **National Environmental Management: Protected Areas Act 57 of 2003 - NEMPAA**

The National Environmental Management: Protected Areas Act declares its objectives as “to promote sustainable utilisation of protected areas for the benefit of people, in a manner that would preserve the ecological character of such areas; and to promote participation of local communities in the management of protected areas, where appropriate.” According to this legislation, the purposes of the declaration of areas as protected areas include assisting in ensuring the sustained supply of environmental goods and services; providing for the sustainable use of natural and biological resources; creating or augmenting destinations for nature-based tourism; managing the interrelationship between biodiversity, human settlement and economic development.

Among the purposes of the declaration of protected areas the Act mentions the protection of ecologically viable areas representative of South Africa’s biological diversity and its natural landscapes and seascapes in a system of protected areas, preservation of the ecological integrity of those areas and conservation of biodiversity in those areas. In addition, the Act allows for ensuring the sustained supply of environmental goods and services, providing for the sustainable use of natural and biological resources, and creating or augmenting destinations for nature-based tourism. The Act also mentions the purpose of managing the interrelationship between biodiversity, human settlement and economic development and contributing to human, social, cultural and spiritual development.

### **National Environmental Management: Biodiversity Act, 10 of 2004 - NEMBA**

The National Environmental Management: Biodiversity Act (NEMBA) provides for the management and conservation of South Africa's biodiversity within the framework of the National Environmental Management Act, 1998; the protection of species and ecosystems that warrant protection; the fair and equitable sharing of benefits arising from bioprospecting involving indigenous biological resources; the establishment and functions of a South African National Biodiversity Institute; and for matters connected therewith. The Act recognizes, among other things, that biodiversity conservation involves working beyond the boundaries of formal protected areas, across production and communal landscapes. South Africa published its National Biodiversity Strategy and Action Plan (NBSAP) in 2005. National targets, aligned with the Kunming-Montreal Global Biodiversity Framework, have already been developed. Along with the National Biodiversity Assessment (2018), these documents serve as the basis for the National Biodiversity Framework (NBF) which is updated every five years as required by the Biodiversity Act.

### **WWF Standard on Stakeholder Engagement**

The WWF GEF Agency requires all GEF projects comply with GEF and WWF standards on Stakeholder Engagement, specifically the WWF [Standard on Stakeholder Engagement](#) and the associated [Procedures for Implementation of the Standard on Stakeholder Engagement](#). Stakeholder engagement is an

overarching term that encompasses a range of activities and interactions with stakeholders throughout the project cycle and is an essential aspect of good project management.

In addition to the WWF Standard on Stakeholder Engagement requirement, SANParks as the Executing Agency of the GEF 8 *Reimagining National Parks for People and Nature – Mega Living Landscapes Project* to engage stakeholders throughout the life of the project; communicate significant changes to project stakeholders and consult on potential risks and impacts; establish a grievance redress mechanism and register and respond to grievances throughout project execution, and disseminate information in a way that is relevant, transparent, objective, meaningful, and easily accessible. The Standard on Stakeholder Engagement promotes an inclusive process to support the development of strong, constructive and responsive relationships that help to identify and manage risks, and which encourage positive outcomes for stakeholders and project activities.

In addition to WWF's Standard on Stakeholder Engagement, WWF has developed and adopted a comprehensive Environmental and Social Safeguards Framework (ESSF) to ensure consistent, comprehensive application of safeguards across all projects supported by WWF. To comply with the WWF ESSF, the project will follow the policies, standards, guidance and procedures as detailed in the Environmental and Social Safeguards Integrated Policies and Procedures (SIPP). This is discussed in greater detail in the Environmental and Social Safeguards Management Framework (ESMF) developed for the project (See Annex 12 to the CEO Doc).

Stakeholder engagement and desktop analysis undertaken during the PPF stage has indicated that there are no Indigenous Peoples in the three MLLs where project activities will be undertaken. Indigenous Peoples are distinct social and cultural groups that share collective ancestral ties to the lands and natural resources where they live, occupy or from which they have been displaced. The land and natural resources on which they depend are inextricably linked to their identities, cultures, livelihoods, as well as their physical and spiritual well-being. They often subscribe to their customary leaders and organizations for representation that are distinct or separate from those of the mainstream society or culture. Many Indigenous Peoples still maintain a language distinct from the official language or languages of the country or region in which they reside; however, many have also lost their languages or on the precipice of extinction due to eviction from their lands and/or relocation to other territories<sup>1 2</sup>. In South Africa, the Khoi and San peoples are considered Indigenous Peoples.

This Stakeholder Engagement Plan should therefore be implemented in an integrated manner along with the Social Inclusion Planning Framework (included in ESMF – see Annex 5.2) as well as the project's Gender Action Plan (see additional Annex 6.2), paying special attention to ensuring the active involvement of women and marginalised groups including indigenous people (were these to be identified), persons with disabilities, youth and the elderly.

The project will adopt biosecure engagement processes following established protocols to reduce the spread of any communicable diseases.

### 3. Project Stakeholders

Stakeholder engagement is recognised as a range of activities and interactions with stakeholders throughout the project cycle and is an essential aspect of good project management. Effective stakeholder engagement is crucial for the successful implementation of the GEF 8 *Reimagining National Parks for*

---

<sup>1</sup> <https://www.worldbank.org/en/topic/indigenouspeoples>

<sup>2</sup> <https://social.desa.un.org/issues/indigenous-peoples/indigenous-peoples-at-the-united-nations>

*People and Nature – Mega Living Landscapes Project.* For SANParks to achieve the project outcomes stated above, stakeholder engagement needs to facilitate and support a partnership approach to securing habitable MLLs for people and nature.

The roles to be played by stakeholders during implementation have been categorised as follows:

- **Executing agency:** this is SANParks whose primary role in this project is to implement the GEF 8 funded projects within time and budget, ensuring that formal agreements are concluded, executed and reported on. The Project Management Unit (PMU) is housed by SANParks.
- **Sub-executing agency:** responsible for the day-to-day execution of the project's activities according to their responsibilities and budgets as set out in the grant agreement signed with SANParks. SANParks, following a fair and transparent process, will appoint suitably qualified sub-executing agencies, one for each landscape, who will be responsible for project delivery in a particular landscape. Furthermore, a suitably qualified sub-executing agency will be appointed to deliver Framework Plans and Investment Strategies across all landscapes.
- **Project Steering Committee:** the PSC oversees the strategic partners involved in the GEF 8 project providing overall strategic direction, guiding the work plan to align with project objectives.
- **Local communities:** local communities include communal land rights holders and users, rural town dwellers and community-based organisations engaged in conservation and sustainable development. Local communities are the primary beneficiaries of project interventions and will be actively engaged to inform project implementation.
- **Co-finance partners:** will provide co-finance to the project.
- **Collaborating partners:** will collaborate during project implementation as appropriate, for example a local authority in a particular landscape will collaborate around local economic development relevant to their area.
- **Members of landscape collaborative platforms:** will be members of the various collaborative platforms established in each of the MLLs, the nature of which depends on that landscape. Members may include relevant representatives from the three spheres of government, traditional leadership, local communities, People and Parks Forums, indigenous knowledge communities, local NGOs and CBOs, agricultural commodity bodies, and representatives of vulnerable and marginalized groups.
- **Project technical and/or capability support:** will provide support to project implementation on technical and/or capability aspects, for example SANBI will provide technical data on the status of biodiversity and capability inputs on their experience of successful skills programs.

The engagement approach will involve the flow of information to inform stakeholders of the proposed activities and the co-creation of implementation pathways, which provides opportunities for collaborators, including local communities and marginalized groups, to actively engage in the implementation and outcome of proposed activities. A joint strategy for action as proposed through the development of Landscape Plans for each MLL (Outcome 1.1) will be undertaken. Landscape Plans will be informed by detailed MLL level SEPs which will be undertaken within the first year of implementation. The MLL level SEP will demonstrate alignment with the Social Inclusion Planning Framework (as set out in the ESMF – see Annex 5.2) and the Gender Action Plan, to ensure that local communities, and including marginalized groups, are identified and appropriately included in MLL level planning, collaboration and implementation.

Each of the MLLs have multiple spheres of influence and institutional arrangements from an international to a local level that determine the land-use and development practices within the landscape.

At a national level, there are multiple departments that are involved in the development and regulatory environment. These core departments, through their key drivers and intergovernmental structures, could embed the outcomes of the MLLs within their national and provincial structures. This further extends to district and local government who will be engaged to consider the outcomes of the MLLs and include where appropriate in District Development Plans and municipal Integrated Development Plans.

The project’s stakeholder engagement approach is premised on the principles outlined in the table below:

Principle	Stakeholder participation will:
Value Adding	be an essential means of adding value to the project
Inclusivity	include all relevant stakeholders
Accessibility and Access	be accessible and promote access to the process
Transparency	be based on transparency and fair access to information; main provisions of the project’s plans and results will be published in local mass-media
Fairness	ensure that all stakeholders are treated in a fair and unbiased way
Accountability	be based on a commitment to accountability by all stakeholders
Constructive	seek to manage conflict and promote the public interest
Redressing	seek to redress inequity and injustice
Capacitating	seek to develop the capacity and capabilities of all stakeholders
Needs Based	be based on the needs of all stakeholders
Flexible	be flexibly designed and implemented
Rational and coordinated	be rationally planned and coordinated, and not be ad hoc
Excellence	be subject to ongoing reflection and improvement

*Table 1: Stakeholder Engagement Principles*

### **National Government Entities**

Stakeholder	Mandate / Role	Relevance to the project
Department of Forestry Fisheries and the Environment (DFFE)	<p>The legal mandate and core business of the (DFFE) are to manage, protect and conserve South Africa’s environment and natural resources. The mandate is informed by section 24 of the Constitution of the Republic of South Africa, 1996. The department provides leadership in environmental management, utilisation, conservation and protection of ecological infrastructure, and is an umbrella body to the provincial conservation bodies.</p> <p>DFFE convenes the national People and Parks Forum, which aims to address issues at the interface between conservation and communities, in particular the realization of tangible benefits by communities who were previously displaced to pave way for the establishment of protected areas. The Forum facilitates active participation of rural communities through supporting the resolution of land claims in PAs; strengthening</p>	<p>DFFE is the Government of South Africa’s GEF focal point. DFFE has established four public entities to support with fulfilling its mandate, including the South African National Parks.</p> <p>Will be represented on the Project Steering Committee.</p>

Stakeholder	Mandate / Role	Relevance to the project
	governance, participation, access to and benefit sharing from PAs; and developing and implementing a capacity building and awareness raising strategy.	
South African National Parks (SANParks)	SANParks was established in terms of the National Environmental Management: Protected Areas Act, 2003 (Act No. 57 of 2003). SANParks aims to develop, protect, expand, manage and promote a system of sustainable national parks that represents natural and cultural heritage assets, through innovation, excellence, responsible tourism and just socio-economic benefit for current and future generations. SANParks Vision 2040, the driving energy behind this project, calls for SANParks to facilitate harmonious relationships between societal needs, human wellbeing, and environmental management requirements.	SANParks is the Project Executing Entity for the GEF 8 <i>Reimagining National Parks for People and Nature – Mega Living Landscapes Project</i> . SANParks will chair the Project Steering Committee.
South African National Biodiversity Institute (SANBI)	<p>SANBI was established in terms of section 10 (1) of the National Biodiversity Management: Biodiversity Act, Act 10 of 2004.</p> <p>The mandate of SANBI is to play a leading role in South Africa’s national commitment to biodiversity management, and it is tasked to lead the country’s biodiversity research agenda, in partnership with the DFFE. SANBI provides scientific advice and information on biodiversity to DFFE and the South African public sector and civil society.</p>	Is the Project Executing Entity for a sister GEF 8 project titled ‘The thriving People and Nature Project’ and there may be opportunities for sharing of lessons from implementation.
National Treasury	The National Treasury is responsible for managing South Africa’s national government finances. Supporting efficient and sustainable public financial management is fundamental to the promotion of economic development, good governance, social progress and a rising standard of living for all South Africans. The Constitution of the Republic (Chapter 13) mandates the National Treasury to ensure transparency, accountability and sound financial controls in the management of public finances. SANParks receive its government grant from National Treasury and must report to them in terms of the Public Finance Management Act.	Project Steering Committee member.
Department of Agriculture, Land Reform and Rural	The mission of the DALRRD is to accelerate land reform, catalyse rural development and improve agricultural production to stimulate economic development and food security.	Agriculture is a current primary land use in the three MLLs and as such there is opportunity for fostering

Stakeholder	Mandate / Role	Relevance to the project
Development (DALRRD)		collaborative efforts across the three MLLs. Potential collaborative partner for extension support to conservation areas.
Department of Traditional Affairs (DTA) and its National House of Traditional and Khoi San Leaders	The mission of the DTA is to provide a national traditional affairs governance system in support of cooperative governance for an improved quality of life of South Africans. The main objectives of the National House of Traditional and Khoi San Leaders are to represent and advance the aspirations of traditional leaders and their rural communities at national level.	Two of the three project MLLs include traditional authorities within their planning area. Traditional leaders and communities are stakeholders and direct beneficiaries <sup>3</sup> of the project.  Potential collaborative partner for engagement with traditional authorities.

Table 2: National Government Entities

### Sub-national Government Administration

Stakeholder	Mandate / Role	Relevance to the project
Eastern Cape Department of Economic Development, Environmental Affairs and Tourism (DEDEAT)	Eastern Cape Provincial department incorporating Environmental Affairs, responsible for policy, environmental management and development approvals.	Two of the MLLs are in the Eastern Cape. Potential policy engagement with regards to provincial protected area and conservancies/conservation areas support.
Eastern Cape Parks and Tourism Agency (ECPTA)	Eastern Cape Provincial conservation authority, with the responsibility of provincial protected area expansion and tourism development.	Potential implementation support partner with regards to protected area expansion in the Eastern Grasslands and Greater Addo MLLs. Member of Eastern Grasslands and Greater Addo landscape collaborative platforms.
Eastern Cape Department of Rural Development and Agrarian Reform (ECDRAR)	The ECDRAR's mission is to promote, support and coordinate rural development and agrarian reform interventions to reduce poverty and underdevelopment through job creation, integrated food security programmes, and equitable participation in development by all rural communities.	As the Eastern Cape provincial department responsible for agriculture and rural development, the ECDRAR could be a potential implementation support partner in the Eastern Grasslands and Greater Addo MLLs. Member of the Eastern Grasslands and Greater Addo landscape collaborative platforms.
Eastern Cape Development Corporation (ECDC)	ECDC's mandate is to plan, finance, co-ordinate, market, promote and implement development of the province and its people	Potential stakeholder for the Eastern Grasslands and Greater Addo MLLs to explore opportunities for

<sup>3</sup> The GEF defines direct beneficiaries, disaggregated by sex, as the count of individuals who directly benefit from GEF-financed projects.

Stakeholder	Mandate / Role	Relevance to the project
	in the fields of industry, commerce, agriculture, transport and finance.	collaborative funding opportunities based on provincial development priorities. Member of the Eastern Grasslands and Greater Addo landscape collaborative platforms.
Mpumalanga Department of Agriculture, Rural Development, Land and Environmental Affairs (DARDLEA)	Mpumalanga provincial department incorporating environmental affairs, rural development and agriculture.	As the Mpumalanga provincial department responsible for environmental affairs, agriculture and rural development, the DARDLEA could be a potential implementation support partner in the Greater Kruger (Barberton/Makhonjwa) MLL.
Mpumalanga Department of Economic Development and Tourism	Mpumalanga provincial department incorporating economic development and Tourism	As the Mpumalanga provincial department responsible for economic development and tourism, the department could be a potential implementation support partner in the Greater Kruger (Barberton/Makhonjwa) MLL.
Mpumalanga Tourism and Parks Agency	Mpumalanga Provincial conservation authority, with the responsibility of provincial protected area expansion and tourism development.	Potential implementation support partner with regards to protected area expansion in the Greater Kruger (Barberton/Makhonjwa) MLL. Member of Greater Kruger (Barberton/Makhonjwa) landscape collaborative platform.
Alfred Nzo District Municipality	District Municipality forming part of the Eastern Grasslands MLL	Understand priorities and challenges at the municipal level with specific reference to local economic development opportunities. Member of the Eastern Grasslands landscape collaborative platform.
Chris Hani District Municipality	District Municipality forming part of the Greater Addo MLL	Understand priorities and challenges at the municipal level with specific reference to local economic development opportunities. Member of Greater Addo landscape collaborative platform.
Ehlanzeni District Municipality	District Municipality forming part of the Greater Kruger (Barberton/Makhonjwa) MLL	Understand priorities and challenges at the municipal level with specific reference to local economic development opportunities. Member of Greater Kruger (Barberton/Makhonjwa) landscape collaborative platform.
Gert Sibande District Municipality	District Municipality forming part of the Greater Kruger (Barberton/Makhonjwa) MLL	Understand priorities and challenges at the municipal level with specific reference to local economic development opportunities.

Stakeholder	Mandate / Role	Relevance to the project
		Member of the Greater Kruger (Barberton/Makhonjwa) landscape collaborative platform.
Joe Gqabi District Municipality	District Municipality forming part of the Eastern Grasslands MLL	Understand priorities and challenges at the municipal level with specific reference to local economic development opportunities. Member of Eastern Grasslands landscape collaborative platform.
Sarah Baartman District Municipality	District Municipality forming part of the Greater Addo MLL	Understand priorities and challenges at the municipal level with specific reference to local economic development opportunities. Member of Greater Addo landscape collaborative platform.
Provincial People and Parks Forums for Eastern Cape and Mpumalanga	Provincial Forums facilitate active participation of rural communities through supporting the resolution of land claims in PAs; strengthening governance, participation, access to and benefit sharing from PAs; and developing and implementing a capacity building and awareness raising strategy.	Understand priorities and challenges at the community level with specific reference to the interface between communities and conservation.  Members of the Greater Kruger (Barberton/Makhonjwa), Eastern Grasslands and Greater Addo landscape collaborative platforms.
Provincial Houses of Traditional and Khoi-San Leaders for Eastern Cape and Mpumalanga	The main objectives of the Provincial Houses of Traditional and Khoi San Leaders are to represent and advance the aspirations of traditional leaders and their rural communities at provincial level.	Understand priorities and challenges at the Traditional Leadership level with specific reference to governance, cultural heritage and socioeconomic development within Traditional Authority areas.  Members of Barberton – Makhonjwa, Eastern Grasslands and Greater Addo landscape collaborative platforms.

*Table 3: Sub-national Government Administration*

**Existing NGOs and other civil society bodies operating in the landscapes**

Stakeholder	Mandate / Role	Relevance to the project
Care for Wild (CfW)	CfW's mission is rooted in a holistic approach to conservation, encompassing the preservation of the rhino species and the protection of biodiversity. CfW is key partner to SANParks' work in the Greater Kruger Park landscape and operates a range of rural and community development initiatives in the Greater Kruger (Barberton/Makhonjwa) MLL.	Care for Wild is an engaged stakeholder active in the Greater Kruger (Barberton/Makhonjwa) MLL.  Member of Greater Kruger (Barberton/Makhonjwa) landscape collaborative platform.
Conservation South Africa (CSA)	Conservation South Africa is an independent affiliate of Conservation International, legally registered as a Section 18A public benefit organisation in South Africa. Conservation South Africa supports economic development within rural communities in a manner that restores and secures nature.	CSA focuses on providing benefits for rural communities from conserving biodiversity. This is done through their sustainable veld management/grazing practices and associated initiatives. Member of the Eastern Grasslands landscape collaborative platform.
Eastern Cape Game Management Association (ECGMA)	ECGMA is a non-profit organisation that was established in 1980 by Eastern Cape game farmers to promote and protect the management of game.	ECGMA has a very strong membership base in the Greater Addo MLL. Member of Greater Addo landscape collaborative platform.
Eden to Addo	Conservation NGO focused on linking Addo to the Garden Route region, performing stewardship activities with landowners.	Eden to Addo is an engaged stakeholder active in the Greater Addo MLL. Member of Greater Addo landscape collaborative platform.
Environmental and Rural Solutions (ERS)	Operating within and alongside the Drakensberg Mountains, ERS is dedicated to restoring biodiversity, improving livelihoods, and enhancing local governance of natural resources.	ERS is an engaged stakeholder active in the Eastern Grasslands MLL. Member of the Eastern Grasslands landscape collaborative platform.
Indigenous Knowledge groups in the three MLLs	Contribute guidance on indigenous knowledge history and practices to ensure that project implementation supports these practices where appropriate with local communities across the three MLLs.	Understand priorities of local communities with regards to indigenous knowledge practices that can enhance the effectiveness of project interventions. Groups to be identified as part of the process to develop an MLL wide Stakeholder Engagement Plan.  Members of Barberton – Makhonjwa, Eastern Grasslands and Greater Addo landscape collaborative platforms.
Meat Naturally Africa (MNA)	MNA brings together livestock farmers, NGOs, meat buyers, and stakeholders in the meat value chain. MNA provides education, farming resources, grazing expertise, and market opportunities	Implementers of communal rangeland conservation agreements and benefits. Potential implementation support stakeholder in MLLs with traditional authorities.

Stakeholder	Mandate / Role	Relevance to the project
	towards the restoration of Africa's rangelands.	Member of the Greater Kruger (Barberton/Makhonjwa) and Eastern Grasslands landscape collaborative platforms.
SA College of Tourism (SACT)	SACT is a non-profit organisation that operates under the auspices of Peace Parks Foundation. The College provides professional training to unemployed men and women from rural backgrounds, to equip them to take up skilled positions in the nature-based tourism industry.	Potential Tourism training support partner in the Addo MLL. Member of Greater Addo landscape collaborative platform.
SA Tourism Services Association	SATSA promotes credibility, integrity, inclusivity, and diversity within the inbound tourism industry, supporting and representing the interests of members, fostering collaboration, sharing best practices, and advocating for policies that promote the growth and recognition of the inbound tourism industry, while protecting unique natural and cultural heritage and reputation.	Potential tourism training support stakeholder that could provide training in the MLLs.
The Nature Conservancy (TNC)	The Nature Conservancy is a US based conservation NGO, with a division in South Africa, tackling the dual threats of accelerated climate change and unprecedented biodiversity loss.	Biodiversity stewardship and collaborative landscape and waterscape partnerships. Member of Greater Addo landscape collaborative platform.
Wilderness Foundation Africa (WFA)	Wilderness Foundation Africa is an African-based conservation NGO that protects and sustains landscapes through its innovative approach to conservation.	WFA works to promote protected area expansion, enhance wildlife habitats and conservation efforts in the region. WFA is an engaged stakeholder active in the Greater Addo MLL. Member of Greater Addo landscape collaborative platform.
Worldwide Fund for Nature (WWF) – South Africa	WWF-SA is a South African NGO and local chapter of WWF. Its work is focused on biodiversity conservation, sustainable development, climate change mitigation and adaptation, advocacy and policy influence, and science and research	WWF-SA plays a key role in building relationships between protected areas and communities by supporting partnerships between communities, NGOs and government institutions. Alongside SANParks, WWF-SA is a lead partner in the establishment of the Grasslands National Park, which forms the core of the Eastern Grasslands MLL. Local representative of the WWF GEF Agency on the Project Steering Committee.
Wildlife Ranching South Africa (WRSA)	An NPO representing the interests of wildlife ranchers in South Africa.	A key stakeholder group in the Greater Addo MLL. Member of Greater Addo landscape collaborative platform.

Table 4: Existing NGOs and other civil society bodies operating in the landscapes

## Existing Indigenous Peoples and Local Communities in the landscape

Stakeholder	Mandate / Role	Relevance to the project
Nkosi (chief) Tikhontele Dhlamini, traditional leader of the Lomshiyo Community	The Lomshiyo Traditional Authority, including the Lomshiyo Community Trust, is a landowner within Barberton Nature Reserve - within the core of the Greater Kruger (Barberton/Makhonjwa) MLL - and Mthethomusha Nature Reserve which and is a land claim beneficiary within the Kruger National Park.	The Nkosi provided his support for the project to be implemented on Lomshiyo Community land. The Lomshiyo Traditional Authority/ community is a focal community within the Greater Kruger (Barberton/Makhonjwa) MLL; and project activities are aimed at directly benefiting the community.
Lomshiyo Traditional Authority and its local communities: Mandela, Noordkaap, Sheba, Gaza, Louieville, Lows Creek, Shalock, Shiyalongubo, Verulam, Fairview Mine, Matsulu	The Lomshiyo Traditional Authority, including the Lomshiyo Community Trust, is a landowner within Barberton Nature Reserve - within the core of the Greater Kruger (Barberton/Makhonjwa) MLL - and Mthethomusha Nature Reserve which and is a land claim beneficiary within the Kruger National Park.	The Lomshiyo Traditional Authority and its local communities are focal communities within the Greater Kruger (Barberton/Makhonjwa) MLL; and project activities are aimed at directly benefiting these communities. Member of the Greater Kruger (Barberton/Makhonjwa) landscape collaborative platform.
Local communities in the Ebutsini Traditional Authority (including Aarnhemburg, Mooiplaas, Mooiplaats, Stinini)	Ebutsini Traditional Authority is a landowner within the Greater Kruger (Barberton/Makhonjwa) MLL.	Local communities who are land rights holders and users within the Ebutsini Traditional Authority will directly benefit from project activities, particularly those related to sustainable rangeland management. Member of the Greater Kruger (Barberton/Makhonjwa) landscape collaborative platform.
Local communities in the Nkhaba Traditional Authority (including Nhlaba, Ngonini, Kroomdraai, Elukhetseni)	Nkhaba Traditional Authority is a landowner within the Greater Kruger (Barberton/Makhonjwa) MLL.	Local communities who are land rights holders and users within the Nkhaba Traditional Authority will directly benefit from project activities, particularly those related to sustainable rangeland management. Member of the Greater Kruger (Barberton/Makhonjwa) landscape collaborative platform.
Upper Tsitsana and Batloka Traditional Authorities and its local communities	The Upper Tsitsana Traditional Authority is a landowner in the Eastern Grasslands MLL and has expressed an interest in including some of its land in the proposed Grasslands National Park.	Local communities who are land rights holders and users within the Upper Tsitsana Traditional Authority will directly benefit from project activities, particularly those related to sustainable rangeland and restoration management.

Stakeholder	Mandate / Role	Relevance to the project
		Member of the Eastern Grasslands landscape collaborative platform.
Pitsing Farmers' Association (emerging black farmers)	A group of black farmers who have expressed an interest in including their land in the proposed Grasslands National Park. They use their land for livestock grazing and other forms of agriculture.	The Pitsing Farmers' Association are strategic landowners in the proposed Grasslands National Park which forms the core of the Eastern Grasslands MLL; and could potentially be catalytic for encouraging other black farmers to consider conservation related land uses. Member of Eastern Grasslands landscape collaborative platform.
Maloti Thaba Tsa Metse Traditional Authority and its local communities	The Maloti Thaba Tsa Metse Traditional Authority is a landowner in the Eastern Grasslands MLL and are currently in the process of declaring their land as a Protected Environment.	Local communities who are land rights holders and users within the Upper Tsitsana Traditional Authority will directly benefit from project activities, particularly those related to sustainable rangeland and restoration management. Member of the Eastern Grasslands landscape collaborative platform.

Table 5: *Existing Indigenous Peoples and Local Communities in the landscape*

### **Private Sector organisations operating in the landscapes**

Stakeholder	Mandate / Role	Relevance to the project
Agri Eastern Cape	Provide support to 3000 farmers in the Eastern Cape, aiming to develop agriculture as a sustainable sector, provide support to farmers in natural resource management	Relevant stakeholder that can provide insights to the potential support provided to farmers/landowners in the Greater Addo MLL. Member of Greater Addo landscape collaborative platform.
Johan Rupert Foundation	Rupert Family Foundation, focused on supporting various initiatives in the Graaf Reinet region of the Greater Addo MLL.	The Foundation funds a range of environmental initiatives in the Addo MLL and in South Africa more broadly.
Mountain Zebra Camdeboo Protected Environment (MZ-CPE) Landowners Association	The MZC PE Landowners Association is the assigned Management Authority of the MZC Protected Environment.	The MZ-CPE Landowners Association represents a significant proportion of conservation minded landowners in the Greater Addo MLL. Member of Greater Addo landscape collaborative platform.
SA Tourism Services Association	SATSA promotes credibility, integrity, inclusivity, and diversity within the inbound tourism industry, supporting and representing the interests of members, fostering collaboration, sharing best practices, and advocating for policies that promote the	Understand potential training opportunities that could be provided in the MLLs. Potential implementation partner for tourism related training and SMME

Stakeholder	Mandate / Role	Relevance to the project
	growth and recognition of the inbound tourism industry, while protecting unique natural and cultural heritage and reputation.	development activities across the three MLLs
Sappi	Sappi is a multi-national plantation forestry company that owns land in the Greater Kruger (Barberton/Makhonjwa) MLL, including land that is strategically located between Barberton and Songimvelo Nature Reserves.	Strategically located landholder in the Greater Kruger (Barberton/Makhonjwa) MLL.
The Nkomazi Wilderness Area	A privately owned nature reserve that has considerable potential to be developed for community benefits through tourism and the wildlife economy.	Strategically located landholder in the Greater Kruger (Barberton/Makhonjwa) MLL.
Tourvest	Tourvest is Southern Africa's leading integrated tourism group, operating businesses which range from travel management companies, hotels, lodges and restaurants to craft, curio and jewelry shops and foreign exchange bureau, under some 60 sector-leading brands, employing more than 5 000 people.	Potential for development of appropriate tourism business opportunities across the MLLs.

Table 6: Private Sector organisations operating in the landscapes

#### Academia in the landscapes

Stakeholder	Mandate / Role	Relevance to the project
Rhodes University	Academic research funding and scholars in environmental, natural and social sciences.	Potential for developing research partnerships in the Greater Addo and Eastern Grasslands MLLs
Nelson Mandela Metropolitan University	Academic research funding and scholars in environmental, natural and social sciences.	Potential for developing research partnerships in the Greater Addo and Eastern Grasslands MLLs
University of Mpumalanga	Academic research funding and scholars in environmental, natural and social sciences.	Potential for developing research partnerships in the Barberton – Makhonjwa MLL

Table 7: Academia in the landscapes

#### 4. Summary of any previous stakeholder engagement activities

Whilst extensive deep dive engagements will take place in each MLL during the 1<sup>st</sup> year of implementation of GEF Project to refine detailed activities, initial stakeholder engagement kicked off with a national technical design workshop on 19 March 2024 in Pretoria, South Africa. The workshop was attended by 25 representatives from national and provincial government, conservation agencies as well as civil society organisations. The objectives of the workshop included:

- Building stakeholders' understanding of the GEF 8 MLL project results framework & planning requirements.
- Updating stakeholders regarding the context & key issues in each landscape.
- Discussions on key concepts & lessons with regards to what an MLL is as well as to reflect on good examples of existing landscape partnerships.

The technical design workshop was followed by stakeholder engagement as set out in the Stakeholder Engagement Plan for the project design phase. The project was designed through a co-design process, which meant that objectives, outcomes, strategies and approaches were all jointly designed and decided upon between the key stakeholders. Stakeholder engagement took place between April and October 2024. A summary of the stakeholder engagements, drawing from the stakeholder engagement register attached as Appendix 2, indicates that:

- ~ 100 discrete consultation sessions were undertaken.
- ~ 75 different groupings/entities were engaged with – national, provincial, local government, traditional authorities, local communities, NGOs, conservancies, Protected Environments, and the private sector.
- ~ 325 individuals were engaged of which 198 were women.
- Stakeholder engagement took place predominantly at the national level (43 engagements) where it focused on capabilities, durable financing and due diligence aspects of project design.
- Engagement at the MLL level focused on the design of MLL level activities including livelihoods, socio-economic and protected area expansion outcomes. MLL level engagements were as follows: Greater Addo MLL (22), Greater Kruger (Barberton/Makhonjwa) MLL (11) and Eastern Grasslands MLL (7).
- Design workshops were conducted in each of the MLLs with a view to developing the programme of work for each landscape.
- Furthermore, engagements were undertaken with women and youth to inform the Gender Analysis and Action Plan.

Representatives from the WWF-US, the GEF Implementing Entity, participated in the Greater Kruger (Barberton/Makhonjwa) MLL design process from 12 to 16 August 2024. This engagement with the WWF-US team was useful in working through complex design aspects and reaching agreement on possible pathways for project implementation. Engagement during this week included a briefing meeting with Nkosi (Chief) Tikhontele Dhlamini, traditional leader of the Lomshiyo Community. The Lomshiyo community owns land within the Barberton Nature Reserve which forms the core of the Greater Kruger (Barberton/Makhonjwa) MLL. The Lomshiyo community are direct beneficiaries of project activities in the Greater Kruger (Barberton/Makhonjwa) MLL. The Nkosi provided his support for the project to be implemented on Lomshiyo Community land.

The private sector has been actively engaged through agriculture commodity sector bodies, tourism operators, renewable energy and carbon project developers, and private landowners. Their inputs have been incorporated into the project design.

Through the stakeholder engagement process undertaken; and following the approval of the GBFF project concept titled *Reimagining National Parks for People and Nature – Leveraging Durable Financing Mechanisms for Mega Living Landscapes*; it became clear that these two projects needed to be designed within a vision of a larger Mega Living Landscapes Initiative, focused on contributing to SANParks long term vision, facilitated through Vision 2040, of securing eight MLLs in South Africa.

Stakeholder Engagement concluded with a Final Design Workshop convened on 2 October 2024, in Johannesburg. The objectives of this workshop were to present what the Mega Living Landscapes Initiative, which currently comprises of the GEF8 and GBFF projects, will do and how the objectives will be achieved. The workshop was attended by 40 representatives from national and provincial government, conservation agencies as well as civil society organisations. The outcomes of the meeting were largely positive, with delegates supporting the proposed project plan and providing useful input for refinement.

Furthermore, project design within the Eastern Grasslands and Greater Kruger (Barberton/Makhonjwa) MLLs have been informed by the outcomes and expressed concerns and aspirations of local communities and land rights holders and users of prior stakeholder engagement within these landscapes.

In the case of the Eastern Grasslands MLL, stakeholder engagement has been undertaken with a range of stakeholders, including traditional authorities and local communities, district and local municipalities and civil society organisations (CSOs), as part of the process of developing a vision for the proposed Grasslands National Park. Also, in the Grasslands MLL, the Umzimvubu Catchment Partnership has actively engaged a wide cross-section of stakeholders, including provincial and local government, traditional authorities, local NGOs and CSOs and local communities for more than 10 years. In the case of the Maloti Thaba Tsa Metse Traditional Authority, extensive engagement has culminated in the traditional authority agreeing to declare parts of their land as a Protected Environment under NEMP:AA.

Within the Barberton- Makhonjwa MLL, Traditional Authorities have been engaged through the process of developing a landscape vision with the Barberton-Makhonjwa World Heritage Site and Barberton Nature Reserve at the core. Care for Wild, in its role as designated management authority for Barberton Nature Reserve, has facilitated this process with a view to promoting nature-positive rural socio-economic development within the landscape.

## 5. Stakeholder Engagement Plan

The purpose of this Stakeholder Engagement Plan is to ensure extensive and consistent involvement of project stakeholders in every stage of the project implementation, supporting effective planning of project interventions, communication and working relationships. SANParks, as the Executing Entity, intends to implement the project in a transparent, inclusive manner and in a way that reflects realities on the ground. In this regard, this Stakeholder Engagement Plan provides guidance to ensure inclusion, transparency and continuous engagement with the local community beneficiaries and other stakeholders during development and implementation of the project.

This Stakeholder Engagement Plan will be implemented in alignment with the Gender Action Plan and the Social Inclusion Planning Framework, which forms part of the Environmental and Social Safeguards Framework and draws on WWF’s policy on Indigenous People. The Social Inclusion Planning Framework sets out activities that require Free, Prior and Informed Consent from marginalized and vulnerable groups (including Indigenous Peoples were they to be found through the process of preparing community level Social Inclusion Plans) as well as provides for people’s right to self-determination.

The following table sets out the various stakeholder types and how they will be engaged during project implementation:

Stakeholder Type	Name	Frequency of Engagement/ Project Years	Engagement During Project Implementation
------------------	------	--	--

<b>Government of South Africa</b>	Department of Forestry Fisheries and the Environment (DFFE)	Quarterly and ongoing, throughout project term	Government stakeholders at the senior and technical levels will be engaged/consulted through regular project implementation and update meetings. Government technical staff will be invited as participants at relevant project planning, monitoring and evaluation, and reporting meetings. DFFE to facilitate representation by national People and Parks Forum.
	National Treasury		
	Department of Agriculture, Land Reform and Rural Development (DALRRD)		
	Department of Traditional Affairs (DTA) and its National House of Traditional and Khoi San Leaders		
	SANParks		
	SANBI		
<b>Sub-national Government</b>	ECDEDEAT	Quarterly, and ongoing, throughout project term	Sub-national government officials at senior and technical levels will be engaged through regular landscape collaboration platform meetings.
	ECPTA		
	ECDRAR		
	ECDC		
	MP DARDLEA		
	MP DEDT		
	MTPA		
	Alfred Nzo DM		
	Chris Hani DM		
	Ehlanzeni DM		
	Gert Sibande DM		
	Joe Gqabi DM		
	Sarah Baartman DM		
	Provincial People and Parks Forum (EC and MP)		
Provincial House of Traditional and Khoi San Leaders (EC and MP)			
<b>Local Communities and Indigenous People</b>	<b>Barberton:</b> Local communities in Lomshiyo Traditional Area including Mandela, Noordkaap, Sheba, Gaza, Louieville, Lows Creek, Shalock, Shiyalongubo, Verulam, Fairview Mine, Matsulu.	Monthly and ongoing, throughout project term.	Local communities are the primary beneficiaries and are important stakeholders to this project. Project staff will be in regular contact with community leaders and project beneficiaries during project implementation. Furthermore, local communities will be engaged through regular landscape collaboration platform meetings.
	<b>Barberton:</b> Local communities in the Nkhamba Traditional Authority: Aarnhemburg, Mooiplaas, Mooiplaats, Stinini.		
	<b>Barberton:</b> Local communities in the Ebutsini Traditional Authority: Nhlaba, Ngonini, Kroomdraai, Elukhetseni		
	Eastern Grasslands: Upper Tsitsana Traditional Authority/ Community		

	<b>Eastern Grasslands:</b> Pitsing Farmers' Association (emerging black farmers)		
	<b>Eastern Grasslands:</b> Maloti Thaba Tsa Metse Traditional Authority		
	<b>Greater Addo:</b> Local communities from following towns: Graaf-Reinet, Craddock, Somerset East, Kirkwood, Thembalesize, uMasizakhe, Jansenville, Klipplaat, KwaZamukuncinga, and Waongaletu		
<b>NGOs</b>	Care for Wild (CfW)	Monthly, and ongoing, throughout project term.	NGOs are collaboration partners in the MLLs, with some serving as potential technical partners responsible for delivering project outcomes. Where appropriate, they will be invited as participants to project planning, monitoring and evaluation, and reporting meetings.
	Conservation South Africa (CSA)		
	Eastern Cape Game Management Association (ECGMA)		
	Eden to Addo		
	Environmental and Rural Solutions (ERS)		
	Meat Naturally Africa (MNA)		
	SA College of Tourism (SACT)		
	SA Tourism Services Association		
	The Nature Conservancy (TNC)		
	Wilderness Foundation Africa (WFA)		
	Worldwide Fund for Nature (WWF) – South Africa		
	Wildlife Ranching South Africa (WRSA)		
<b>Private Sector</b>	Agri Eastern Cape	As need arises throughout project term.	The private sector contains key business partners that can unlock opportunities for private landowners and communities to the community conservancies and related associations. They will be engaged as required at the MLL level.
	Johan Rupert Foundation		
	Mountain Zebra Camdeboo Protected Environment (MZ-CPE) Landowners Association		
	SA Tourism Services Association		
	Sappi		
	The Nkomazi Wilderness Area		
	Tourvest		

Table 8: Stakeholder Engagement Plan

The project will utilize (and strengthen where necessary) existing processes of stakeholder engagement in planning and implementation of project activities. This includes processes and structures relevant to

the establishment of the Grasslands National Park as well as the functioning of the Umzimvubu Catchment Partnership in the Eastern Grasslands MLL. In the Greater Kruger (Barberton/Makhonjwa) MLL, the project will leverage processes and structures facilitated through the co-management of the Barberton Nature Reserve and the management of the Barberton-Makhonjwa World Heritage Site.

Drawing on these existing processes, the project will establish landscape collaborative platforms in each of the project MLLs with the view to building landscape level collaborative decision-making and implementation. To inform the establishment of the landscape collaborative platform, each MLL Hub will develop a detailed MLL level Stakeholder Engagement Plan. This will be undertaken in the first year of implementation so that the MLL level SEP can appropriately inform the establishment of the platform. The MLL level SEP will be reviewed and updated periodically and progress reported on as part of project implementation reporting. Consideration will be given to ensuring representation of a diverse set of stakeholders including traditional authorities, local communities including marginalized groups, landowners, representative bodies. Efforts will be made to address potential power imbalances within these platforms, including through capacity development of community and marginalized group representatives to enable them to participate meaningfully, ensuring that workshop materials are accessible i.e. not using technical language and translating key messages into the most spoken local languages.

Where required, additional support will be provided to marginalized groups to facilitate their active engagement in landscape collaboration platforms, including facilitating pre- landscape collaboration platform meetings to ensure there is participation of all intended members of communities. Consideration will be given to the literacy levels of communities in the project MLLs (the ESMF provides information in this regard) and project and technical information will therefore be shared in an accessible manner using the most spoken local languages and through limiting the use of technical language. There may also be a need to arrange transport to ensure that community representatives are able to attend landscape collaboration platform meetings. Particular attention will be paid to ensure that the views of women and other marginalized groups including the elderly, youth and persons with disabilities are considered, and their participation ensured and facilitated.

During the first year of implementation, local communities will be engaged to ensure the co-creation of community level project interventions. The community engagement process will commence with securing agreement from local communities on their preferred community engagement approach. The Social Inclusion Planning Framework (SIPF) sets out steps for conducting social analysis when entering a community and for undertaking a community level Social Inclusion Plan to ensure that a diverse set of community stakeholders are engaged, including marginalized groups.

The SIPF furthermore provides guidance for undertaking a Free, Prior and Informed Consent process. FPIC ensures that the rights of local communities and marginalized groups are guaranteed in any decision that may negatively affect their lands, territories or livelihoods. It ensures that they have the right to give or withhold their consent to project activities without fear of reprisal or coercion, in a timeframe suited to their own culture, and with the resources to make informed decisions.

A combination of methods will be used when consulting and engaging local communities and marginalized groups, whilst respecting all participants' views and knowledge, including focus group discussions and key informant discussions focused on topics relevant to these groupings and the project. Consultation should make provision for women only groups and be cognisant of other social and political dynamics at play within communities.

In all meetings (individual, site visits, workshops, focus group discussions, key informants), records will be kept and documented for analysis. The documentation will also be used to keep stakeholders informed at different levels on progress, challenges, risks, and emerging opportunities.

A register will be kept, updated regularly and feedback systems developed to ensure that women and other marginalised groups are fully included in project consultations, benefit from the project and informed on the progress on the project.

Details of all stakeholders that have been consulted and identified will be kept in the register. These stakeholders will be kept abreast with information on project implementation through the project's communications strategy which will be developed in the early phases of project implementation. The communications strategy will provide for appropriate feedback mechanisms relevant to each MLL. The communications strategy will be updated regularly throughout project implementation to ensure it makes provision for new stakeholders, activities and partnerships that emerge.

## 6. Resources and Responsibilities

The WWF GEF Project Agency is responsible for oversight. SANParks, as the Executing Agency is responsible for executing the Stakeholder Engagement Plan and overall compliance with the implementation of the Stakeholder Engagement. SANParks' role, apart from overall responsibility, will include supporting the PMU at national level in:

- disclosing and providing project implementation reports and other key documents on agreed timelines and in a transparent way;
- managing and authorising disclosure of information related to the project on all communication methods; and
- leading national consultation level processes for national activities with project partners.

Sub-executing entities appointed to support SANParks in the establishment of the three Mega Living Landscapes and implementation of the project activities will be required to execute the Stakeholder Engagement Plan and comply with the WWF Standard on Stakeholder Engagement as well as South African legislation with regards to stakeholder engagement where applicable. Sub-executing entities will be at the front line of the project and engaging with stakeholders daily.

Budget for project staff at the MLL level, with the requisite budget for travel and workshop costs, have been provided for in the project budget.

## 7. Grievances Mechanism

The grievance redress mechanism is designed to enable the receipt of complaints of Project Affected Peoples (PAPs), including marginalized and vulnerable groups as defined in the Social Inclusion Planning Framework, and public concerns regarding the environmental and social performance of the project. In short, the aim of the mechanism is to provide people fearing, or suffering, adverse impacts with the opportunity to be heard and assisted. It is designed to address the concerns of the local community(ies) impacted by the *Reimagining National Parks for People and Nature – Mega Living Landscapes Project*, identify the root causes of the conflicts, and find options for the resolution of grievances. Therefore, it is an essential tool to foster good cooperation with project stakeholders and ensure adequate delivery of previously agreed-upon results.

This mechanism is designed to:

- Address potential breaches of GEF and WWF’s policies and procedures;
- Be independent, transparent, and effective;
- Be accessible to project-affected people;
- Keep complainants abreast of progress of cases brought forward; and
- Maintain records on all cases and issues brought forward for review.

**The PMU will be responsible for informing project-affected parties about the grievance mechanisms.**

Contact information of the staff member responsible for the grievance mechanism in the PMU need to be made publicly available.

### **Project-Level Grievance Mechanism**

The project will have a direct and tangible effect on local communities, landowners and individuals residing within the three project MLLs located in South Africa. There is thus a need for an efficient and effective Grievance Redress Mechanism (GRM) that collects and responds to stakeholders’ inquiries, suggestions, concerns, and complaints.

As part of the PMU, SANParks will appoint a Monitoring and Evaluation, Safeguards and Gender Officer, who will serve as the Grievance Focal Point for the project and will be responsible for overseeing the Project Grievance Redress Mechanism.

Grievances against activities undertaken in the project including in the MLLs can be lodged through the following channels:

*Reimagining National Parks for People and Nature – Mega Living Landscapes Project* Grievance Focal Point,  
SANParks, 643 Leyds Street, Muckleneuk, Pretoria  
Postal Address: PO Box 787, Pretoria, 0001, South Africa  
Tel: 012 426 5000  
Email: tbc  
Website: [www.sanparks.org/contact](http://www.sanparks.org/contact)

The Grievance Redress Mechanism operates based on the following principles:

- **Fairness:** Grievances are assessed impartially and handled transparently.
- **Objectiveness and independence:** The GRM operates independently of all interested parties to guarantee fair, objective, and impartial treatment to each case.
- **Simplicity and accessibility:** Procedures to file grievances and seek action are simple enough that project beneficiaries can easily understand them and is translated into the locally spoken language/s so that the GRM is accessible to everyone within a given community, especially those who are most vulnerable.
- **Responsiveness and efficiency:** The GRM is designed to be responsive to the needs of all complainants. Accordingly, the Grievance Focal Point, responsible for handling grievances, must be trained to take effective action upon, and respond quickly to, grievances and suggestions.
- **Speed and proportionality:** All grievances, simple or complex, are addressed and resolved as quickly as possible. The action taken on the grievance or suggestion is swift, decisive, and constructive.

- **Participation and inclusiveness:** A wide range of affected people— local communities and vulnerable groups—are encouraged to bring grievances and comments to the attention of the PMU. Special attention will be given to ensure that vulnerable groups are able to access the GRM.
- **Accountability and closing the feedback loop:** All grievances received are recorded and monitored, and no grievance remains unresolved. Complainants are always notified and get explanations regarding the results of their complaint. An appeal option shall always be available.

The Grievance Redress Mechanism includes the following components, which are covered in more detail in the Environmental and Social Safeguards Framework:

1. **Disseminating information about the GRM:** It is essential that project stakeholders including community members and landowners understand and have confidence in the grievance mechanism, which is why materials describing the GRM will be made publicly available early on, both digitally on the websites of SANParks and sub-executing entities, and in physical form in the local language/s appropriate to the landscape, as part of the project stakeholder engagement activities. Through these approaches, the process of lodging and handling grievances will be made clear to all project participants, especially what constitutes a grievance, the right to raise grievances, methods for raising grievances, how complaints are handled and responded to and timeframes.
2. **Submitting complaints:** Project affected people, workers, or interested stakeholders can submit grievances, complaints, questions, or suggestions in verbal or written form, via email, mail, phone call or in person. The appropriate addresses and phone numbers will be identified once the PMU has been established (within the first 6 months of its operation).
3. **Processing complaints:** All grievances submitted to Grievance Focal Point shall be registered and considered, and a tracking registration number should be provided to all complaints. The Grievance Focal Point shall determine the best way to categorize or otherwise sort complaints received, such as based on their nature, the specific matter to which they refer, etc.
4. **Acknowledging the receipt of complaints:** Once a grievance is submitted, the Grievance Focal Point shall acknowledge its receipt, brief the complainant on the grievance resolution process, provide the contact details of the person in charge of handling the grievance, and provide a registration number that would enable the complainant to track the status of the complaint.
5. **Investigating complaints:** The Grievance Focal Point will gather all relevant information, conduct field visits as necessary and communicate with all relevant stakeholders as part of the complaint investigation process. SANParks should ensure that the investigators are neutral and do not have any stake in the outcome of the investigation.
6. **Responding to complainants:** A summary of the complaint raised, actions taken, conclusions reached, follow-up plan and timeframe for completion will be written and communicated to the complainant within 15 working days. If further investigation is required, the complainant will be informed accordingly, and a final response will be provided after an additional period of 15 working days. Grievances that cannot be resolved by the Grievance Focal Point at their level should be referred to a
7. higher level for verification and further investigation.
8. **Appeal:** where parties are unsatisfied with the response provided by the GRM, they will be able to submit an appeal to SANParks within 10 days from the date of decision. Where parties are unsatisfied with the decision of the appeal committee, the parties can submit their grievances directly to the GEF Agency or the Court of Law for further adjudication.
9. **Monitoring and evaluation:** The Grievance Focal Point will compile a quarterly report with full information on the grievances they received. The report shall contain a description of the

grievances and their investigation status. Summarized GRM reports shall constitute part of the regular project progress reporting and shall be submitted to the PMU, PSC and WWF GEF Agency.

The GRM seeks to complement, rather than substitute, the judicial system and other dispute resolution mechanisms. All complainants may therefore file their grievance in local courts or approach mediators or arbitrators, in accordance with the legislation of South Africa.

### **WWF GEF Agency Grievance Mechanism**

Project-affected communities and other interested stakeholders may raise a grievance at any time to the WWF GEF Agency. Contact information of the WWF GEF Agency will be made publicly available.

A grievance can be filed with the Project Complaints Officer (PCO), a WWF staff member fully independent from the WWF GEF Agency, who is responsible for the WWF Accountability and Grievance Mechanism and who can be reached at: Email: [SafeguardsComplaint@wwfus.org](mailto:SafeguardsComplaint@wwfus.org).

#### **Mailing address:**

Project Complaints Officer Safeguards Complaints,  
World Wildlife Fund  
1250 24th Street NW  
Washington, DC 20037

Complaints may be submitted in the Affected Party's home language and should include the following information:

- Complainant's name and contact information;
- If not filed directly by the complainant, proof that those representing the affected people have authority to do so;
- The specific project or program of concern;
- The harm that is or may be resulting from the project;
- The relevant Environmental and Social Safeguards policy or provision (if known);
- Any other relevant information or documents;
- Any actions taken so far to resolve the problem, including contacting WWF;
- Proposed solutions; and
- Whether confidentiality is requested (stating reasons).

The PCO will respond within 10 business days of receipt, and claims will be filed and included in project monitoring.

Stakeholders may also submit a complaint online or over the phone through an independent third-party platform at <https://secure.ethicspoint.com/domain/media/en/gui/59041/index.html> or <https://report.whistleb.com/en/wwf>.

## 8. Monitoring and Reporting

Progress against the Stakeholder Engagement Plan will be monitored and reported on throughout implementation.

The following comprises the monitoring and reporting activities to be undertaken with respect to stakeholder engagement by the PMU:

- The SEP will be periodically reviewed and updated as necessary at an annual Reflection Workshop. The review will ensure that the list of project stakeholders and methods of engagement remain appropriate. Furthermore, the MLL level SEPs to be developed during the first year of implementation will also be subject to periodical review.
- Activities related to stakeholder engagement will be documented and reported by the PMU every 6 months in a Project Progress Report (as part of regular reporting). The project Results Framework and Annual Work Plan and Budget will track beneficiaries of the project and activities related to the Stakeholder Engagement Plan.
- Stakeholder Engagement activities and progress will be monitored through the following indicators:
  - GEF Core Indicator 11: Number of direct beneficiaries disaggregated by gender as co-benefit of GEF investment
  - Indicator SEP 1: Number of government agencies, civil society organizations, private sector, indigenous peoples and other stakeholder groups that have been involved in the project implementation phase on an annual basis
  - Indicator SEP 2: Number persons (sex disaggregated) that have been involved in project implementation phase (on an annual basis)
  - Indicator SEP 3: Number of engagements (e.g. meeting, workshops, consultations) with stakeholders during the project implementation phase (on an annual basis)

Stakeholder Engagement will be evaluated by independent consultants recruited for the project midterm and terminal evaluation.

The WWF GEF Agency will undertake annual supervision missions to ensure compliance, and report on progress against the Stakeholder Engagement Plan annually to the GEF through Project Implementation Reports

## Appendix 1: Stakeholder Analysis

The list of stakeholders listed below have been identified and largely engaged with through the Project Preparation Grant phase.

### NATIONAL MLL INITIATIVE STAKEHOLDERS

Stakeholder	Mandate / Role	Relevance to the project / reason for engagement
Department of Forestry, Fisheries and the Environment	National department of Environmental Affairs - aims to achieve the millennium development goals, particularly environmental protection and poverty reduction. The department aims to provide leadership in environmental management, utilisation, conservation and protection of ecological infrastructure, and is an umbrella body to the provincial conservation bodies.	DFFE is SANParks mother department and GEF focal point.  Represented on Project Steering Committee.
SANBI	SANBI has a broad mandate that is primarily derived from NEMBA, but also from other legislation and processes over the past decade. The mandate is to explore, reveal, celebrate and champion biodiversity for the benefit and enjoyment of all South Africans, which includes managing the National Botanical and Zoological Gardens as 'windows' to South Africa's biodiversity for enjoyment and education.	Involved in design (technical inputs) and validation of draft documents and can contribute to the experience in developing institutional arrangements from other GEF projects and bioregional programmes.
SANParks SET and People and Parks Division	This division within SANParks deals with socio-economic development within and around the Parks, including biodiversity economy, enterprise and supply chain development, Expanded Public Works employment, environmental education and land claim processes.	Key to Component 2 (socio-economic aspects) of the project
National Government Departments, including: <ul style="list-style-type: none"> <li>• Water and Sanitation (DWS)</li> <li>• Co-Operative Governance &amp; Traditional Affairs (CoGTA)</li> <li>• Agriculture, Land Reform and Rural Development (DALRRD)</li> <li>• Tourism (NDT)</li> </ul>	These national departments play crucial roles in implementing policies, delivering services and ensuring effective governance.	These departments could support project activities through cross-sectoral alignment. Potential sources of co-financing in the MLLs.

Stakeholder	Mandate / Role	Relevance to the project / reason for engagement
<ul style="list-style-type: none"> <li>Economic Development</li> </ul>		
Worldwide Fund for Nature (WWF) – South Africa	WWF-SA is a South African NGO and local chapter of WWF, which is the GEF Agency for this project. Its work is focused biodiversity conservation, sustainable development, climate change mitigation and adaptation, advocacy and policy influence, and science and research	<p>WWF-SA plays a key role in building relationships between protected areas and communities by supporting partnerships between communities, NGOs and government institutions.</p> <p>Key stakeholder in the Eastern Grasslands and Greater Kruger (Barberton/Makhonjwa) MLLs.</p>
Conservation South Africa (CSA)	Conservation South Africa is an independent affiliate of Conservation International, legally registered as a Section 18A public benefit organisation in South Africa. Conservation South Africa supports economic development within rural communities in a manner that restores and secures nature.	<p>CSA focuses on providing benefits for rural communities from conserving biodiversity. This is done through their sustainable veld management/grazing practices and associated initiatives.</p> <p>Key stakeholder for durable finance project aspects as well as in the Eastern Grasslands Landscape collaborative platform.</p>
The Nature Conservancy (TNC)	The Nature Conservancy is a US based conservation NGO, with a division in South Africa, tackling the dual threats of accelerated climate change and unprecedented biodiversity loss. Science determines where they focus and equity guides how they achieve lasting results, bringing together real-world solutions, policy expertise, sustainable financing and collaborative partnerships.	<p>Biodiversity stewardship and collaborative landscape and waterscape partnerships</p> <p>Key stakeholder for durable finance project aspects.</p>
SA Tourism Services Association	SATSA promotes credibility, integrity, inclusivity, and diversity within the inbound tourism industry, supporting and representing the interests of members, fostering collaboration, sharing best practices, and advocating for policies that promote the growth and recognition of the inbound tourism industry, while protecting unique natural and cultural heritage and reputation.	<p>Understand potential training opportunities that could be provided in the MLLs.</p> <p>Potential implementation partner for tourism training across the three MLLs.</p>
Tourvest	Tourvest is Southern Africa’s leading integrated tourism group, operating businesses which range from travel management companies, hotels, lodges and restaurants to craft, curio and jewellery shops and foreign exchange bureau, under some 60 sector-leading brands, employing more than 5 000 people.	Understand potential tourism business opportunities in the MLLs.

## GREATER ADDO MLL

As the Addo MLL is the most complex and under-developed of the 3 MLLs, substantial stakeholder engagement was undertaken.

Stakeholder	Mandate / Role	Relevance to the project / reason for engagement
Addo NP staff	SANParks – management of the Addo National Park, responsible for external stakeholder engagements and a lead role in the development of the Addo MLL.	Understanding of the issues, challenges, opportunities around Addo NP, and identify potential further stakeholders with whom to engage. Support to project interventions in the Greater Addo MLL Representation on Greater Addo Landscape collaborative platform
SANParks GEF 7 team	SANParks team coordinating the GEF 7 project, being the development of the biodiversity economy node between Addo and Amathole.	Understanding of the issues, challenges, opportunities around Addo – Amathole GEF 7 project, and identify potential stakeholders with whom to engage. Representation on Greater Addo Landscape collaborative platform
Mountain Zebra NP staff	SANParks – management of the Addo National Park, responsible for external stakeholder engagements and a lead role in the development of the Addo MLL.	Understanding of the issues, challenges, opportunities around MZNP, and identify potential stakeholders with whom to engage. Representation on Greater Addo Landscape collaborative platform. Support to project interventions in the Greater Addo MLL.
Camdeboo NP staff	SANParks – management of the Addo National Park, responsible for external stakeholder engagements and a lead role in the development of the Addo MLL.	Understanding of the issues, challenges, opportunities around CNP, and identify potential stakeholders with whom to engage. Representation on Greater Addo Landscape collaborative platform. Support to project interventions in the Greater Addo MLL.
ECPTA	Eastern Cape Provincial conservation authority, with the responsibility of provincial protected area expansion and tourism development.	Involved in design (technical inputs) and validation of draft documents and contribute to the development of the institutional arrangements. Representation on the Eastern Grasslands and Greater Addo Landscape collaborative platforms Support to project interventions in the Eastern Grasslands and Greater Addo MLL
DEDEAT	Eastern Cape Provincial department incorporating Environmental Affairs, responsibly for policy,	Two of the MLLs are in the Eastern Cape. Potential policy engagement with regards to provincial protected area and conservancies/conservation areas support.

Stakeholder	Mandate / Role	Relevance to the project / reason for engagement
	environmental management and development approvals.	
MZC PE landowners Association	These landowners have declared their properties as part of the Mountain Zebra – Camdeboo Protected Environment, and are key stakeholders focus regarding the component to improve management effectiveness of existing protected areas.	Provide insights into the current management of the MZC PE and understand opportunities for improving management effectiveness. Representation on Greater Addo Landscape collaborative platform
Wildlife Ranching South Africa (WRSA)	NPO representing the interests of wildlife ranchers, a key stakeholder group in the northern part of the MLL.	Many landowners in the Addo MLL engage in wildlife ranching. Opportunity to explore sustainable wildlife practices, and understand their needs in the MLL, as well as their links to Predation Management South Africa Represented on Greater Addo Landscape collaborative platform
Eastern Cape Game Management Association (ECGMA)	ECGMA is a non-profit organisation that was established in 1980 by Eastern Cape game farmers to promote and protect the management of game. In 1984 ECGMA was the initiator of the concept of catalogue game sales in South Africa.	ECGMA has a very strong membership base in the Jansenville area of the Greater Addo MLL, who will be key landowners to engage.
BKB	BKB is a support service entity to farmers around wool, mohair, livestock and agricultural property.	They are a large stakeholder in the area with an active sustainability programme, working with many of the MZC PE landowners, exploring a tool to develop a “biodiversity management scoring” system for landowners.
Agri Eastern Cape	Provide support to 3000 farmers in the Eastern Cape, aiming to develop agricultural as a sustainable sector, provide support to farmers in natural resource management	Can provide insights to the potential support provided to landowners in the greater Addo MLL during project implementation.
National Wool Growers Association	Key support organisation to the wool and sheep farmers in the region.	Important to understand their programmes, resources and priorities in the area, and how they can support the implementation of the project.
Citrus Growers Association	Large industry along the Sundays River, which represents citrus farmers in their engagements with the Citrus Board.	Key to understand their operations, expansion plans and landowner support processes. Potential stakeholder for stewardship and conservation areas in the Greater Addo MLL
HIVE Ecosystems	Hive Ecosystems was established in 2021 to initiate a land restoration project. In 2022, the team secured 7,307 ha land for long term land	Exploring opportunities to learn from and expand their restoration activities in the MLL.

Stakeholder	Mandate / Role	Relevance to the project / reason for engagement
	transformation/restoration in the Albany Thicket biome. They aim to restore parcels of land which have been degraded and depleted of Carbon, Nitrogen and minerals from years of intensive over grazing and agricultural farming.	
Renewable energy developers – Red Cap Energy	A large renewable energy developer in the Eastern Cape focused on developing sustainable large-scale renewable energy projects within South Africa – all in close partnership with the local community, environmental groups and public stakeholders.	Can provide insights into potential renewable energy expansion in the MLL.
Eastern Cape Development Corporation	Their mandate is to plan, finance, co-ordinate, market, promote and implement development of the province and its people in the fields of industry, commerce, agriculture, transport and finance.	Explore opportunities for collaborative funding opportunities based on provincial development priorities.
Wilderness Foundation Africa (WFA)	Wilderness Foundation Africa is an African-based conservation NGO that protects and sustains landscapes through its agile and innovative approach to conservation.	WFA works to promote protected area expansion, enhance wildlife habitats and conservation efforts in the region. Collaboration partner in the Greater Addo MML. Representation on Greater Addo Landscape collaborative platform
EWT	Conservation NGO working in the region, having supported the MZC PE landowners with improved management tools and training.	Potential stakeholder for stewardship and conservation areas in the Greater Addo MLL Representation on Greater Addo Landscape collaborative platform
BirdLife SA	BirdLife South Africa is a registered non-profit, public benefit organization and the only dedicated bird-conservation organisation in South Africa. BirdLife South Africa strives to conserve birds, their habitats and biodiversity through scientifically based programmes, through supporting the sustainable and equitable use of natural resources and by encouraging people to enjoy and value nature.	Potential stakeholder for stewardship and conservation areas in the Greater Addo MLL Representation on Greater Addo Landscape collaborative platform
Eden to Addo	Conservation NGO focused on linking Addo to the Garden Route region, performing stewardship activities with landowners.	Representation on Greater Addo Landscape collaborative platform

Stakeholder	Mandate / Role	Relevance to the project / reason for engagement
Rhodes University	Specialist on regional rehabilitation and restoration activities.	Can provide insights into the best practice activities of ecosystem restoration and how these can be scaled-up in the MLL.
Johan Rupert Foundation	Rupert family Foundation, focused on supporting various initiatives in the Graaf Reinet region.	Key landowner in the MLL and managing key support services in the MLL – Herding Academy, Tourism Academy
Congress of Traditional Leaders (CONTRALESA)	Organisation established to represent traditional leadership in South Africa.	Provide inputs into potential community involvement in the Addo MLL.
Dr Beyers Naude Local Municipality	Local Municipality providing the most essential of public services, such as health and safety, transportation, sanitation, environmental, and utilities.	Understand priorities and challenges in the local municipality, with specific referent to LED opportunities. Representation on Greater Addo Landscape collaborative platform
Inxuba Yethemba Local Municipality	Local Municipality providing the most essential of public services, such as health and safety, transportation, sanitation, environmental, and utilities.	Understand priorities and challenges in the local municipality, with specific referent to LED opportunities. Representation on Greater Addo Landscape collaborative platform
Blue Crane Route Local Municipality	Local Municipality providing the most essential of public services, such as health and safety, transportation, sanitation, environmental, and utilities.	Understand priorities and challenges in the local municipality, with specific referent to LED opportunities. Representation on Greater Addo Landscape collaborative platform
SA College of Tourism (SACT)	SACT is a non-profit organisation that operates under the auspices of Peace Parks Foundation. The College provides professional training to unemployed men and women from impoverished rural backgrounds, to equip them to take up skilled positions in the nature-based tourism industry. In addition to hospitality training, the college offers tracker training through its Tracker Academy, as well as eco-herding skills through a newly launched Herding Academy.	Understand potential training opportunities that could be provided in the Addo MLL. Potential tourism training related implementer in Greater Addo MLL Representation on Greater Addo Landscape collaborative platform
Park Forum members for Addo, Camdeboo and Mountain Zebra NPs	A Forum of stakeholders that are involved with the Parks or may be impacted by the Parks' activities.	Existing Forum stakeholders, with a history of engagements with the Parks and addressing issues around the Parks
Swaershoek Farmers Association		A key Farmers Association surrounding the MZNP.
Samenshoek Farmers Association		A key Farmers Association surrounding the MZNP.

Stakeholder	Mandate / Role	Relevance to the project / reason for engagement
Cradock-Middleburg Tourism	Partnership of tourism entities in the greater Cradock region, aimed at facilitating improved tourism products	To be determined
Landowners	Various landowners of properties in the MLL that could contribute to the establishment of a MLL.	Can contribute to the protected area and conservation areas targets – Component 1.
Cultural Connections for conservation and restoration	Local NGO operating in Pearston, focused on youth development. Uses an Asset Based Community Development approach which is citizen-led and offers very simple, practical and transformational tools for personal and community development.	Youth group based in Pearston. Possible target grouping for project interventions.

#### EASTERN GRASSLANDS MLL

Stakeholder	Mandate / Role	Relevance to the project / reason for engagement
Grasslands National Park Team	SANParks and WWF-SA team, based on the MLL, tasked with the day-to-day work of establishing the Grasslands National Park. The team engages regularly with private landowners and community members in the landscape. It is also responsible for implementing various projects such as agricultural projects within communities and the H&M Certified Wool project.	This team has an intimate understanding of stakeholder dynamics and local politics in the landscape. It engages regularly through informal and formal forums with the full range of stakeholders in the landscape and is tasked with the process of declaring properties within the national park and providing ongoing support to landowners and communal land rights holders who have included their land in the national park.
Upper Tsitsana Community Members	This is a focal community, who fall under a traditional authority, who has expressed an interest in including some of its land in the declared national park. The land to be included will be utilised for sustainable grazing and other livelihood opportunities.	As a focal community for the project, it is anticipated that the Upper Tsitsana Community will provide an example of how community land can be incorporated into the MLL and how community benefits can be developed.
Emerging black farmers (the Pitsing Farmers' Association)	This a group of farmers who have expressed an interest in including their land in the national park. They use their land for livestock grazing and other forms of agriculture.	It is hoped that the inclusion of this land will be catalytic to include the land of other emerging black farmers in the MLL and to demonstrate the types of benefits that this will entail.
The Grasslands National Park Technical Task Team	Representatives from national, provincial and local government, NGO partners, industry groups and	This group of stakeholders has a thorough understanding of the process and progress in establishing the Grasslands National

Stakeholder	Mandate / Role	Relevance to the project / reason for engagement
	other key role players that regularly meet to discuss progress in the establishment of the Grasslands National Park and to guide and coordinate activities within the landscape.	Park and is best placed to provide guidance and inputs into the SANParks GEF 8 MLL Project Design.

#### GREATER KRUGER (BARBERTON/MAKHONJWA) MLL

Stakeholder	Mandate / Role	Relevance to the project / reason for engagement
Care for Wild	Care for Wild implement various projects that can be further developed through the SANParks GEF 8 MLL Project and engage regularly with key stakeholders throughout the landscape.	They have an intimate understanding of stakeholder dynamics and local politics in the landscape and engage regularly with the stakeholder groups that will be the focus of the SANParks GEF 8 MLL Project.
The Mpumalanga Parks and Tourism Agency (MTPA)	The MTPA is the assigned management authority of Barberton and Songimvelo Nature Reserves which will be focal protected areas in the Barberton MLL. A co-management agreement is being negotiated with Care for Wild for Barberton Nature Reserve	To elicit buy-in and to understand the key issues that must be incorporated into the project design to enable the MTPA to fulfil its mandate as the management authority of the provincial nature reserves as the primary provincial conservation authority in Mpumalanga Province.
SANParks Kruger National Park	SANParks is the management authority of the Kruger National Park, which borders the Barberton MLL to its north. Mthethomusha Nature Reserve, which may be included in the project design shares a boundary with the Kruger National Park. Engagement with SANParks staff is required to understand the issues (which include complex community political issues) that must be addressed for the nature reserve to be included in the SANParks GEF 8 MLL Project.	There are likely to be joint opportunities to be explored between the Kruger National Park and the Barberton MLL. Mthethomusha Nature Reserve has suffered from issues of infighting and other community dynamics but it has significant potential to provide meaningful community benefits through tourism and the wildlife economy. It is necessary to understand how the issues could be addressed and whether it would be feasible to include the nature reserve in the SANParks GEF 8 Project.
The Lomshiyo Community	The Lomshiyo community are the primary beneficiaries of the social projects implemented by Care for Wild. Furthermore, the Lomshiyo Community Trust is a landowner within Barberton Nature Reserve and Mthethomusha	As a focal community for the project, it is anticipated that the Lomshiyo Community will provide an example of how community land can be incorporated into the MLL and how community benefits can be developed.

Stakeholder	Mandate / Role	Relevance to the project / reason for engagement
	Nature Reserve and is a land claim beneficiary within the Kruger National Park.	
Emerging black wildlife ranchers	It has been indicated that there is a group of emerging wildlife ranchers located to the west of Barberton Nature Reserve and south of the Kruger National Park. These landowners have apparently received wildlife donations through the Wildlife Economy Programme.	It must be determined what the extent of land ownership and the type of land uses being undertaken on the land to determine the feasibility of including this group in the project design. It must also be determined what benefits and incentives there may be for this group of landowners if they wish to be included in the SANParks GEF 8 MLL Project.
Meat Naturally	Meat Naturally is a social enterprise that assists communities in improved sustainable livestock management and in enabling better market access for communities for their livestock.	Meat Naturally are partnering with Care for Wild for a large-scale sustainable grazing project intended to provide significant benefits for community members in the Barberton MLL.
The Nkomazi Wilderness Area	A privately owned area nature reserve that has considerable potential to be developed for community benefits through tourism and the wildlife economy.	Engagement with the landowners of Nkomzi Wilderness Area to determine its potential for inclusion in the SANParks GEF 8 MLL Project and the role that it would play in the project.
Sappi	Sappi is a multi-national plantation forestry company that owns land in the MLL, including land that is strategically located between Barberton and Songimvelo Nature Reserves that could potentially be restored to enable better connectivity across the landscape.	Engagement with Sappi to determine the feasibility of including their land in the SANParks GEF 8 MLL Project as the primary focus for activities in the ecological restoration economy.

## Appendix 2: Systematic Documentation of Stakeholder Consultations

Date and Venue	Description of Consultation	Objective of the Consultation	Participant Name	Organisation	Email	Tel/Cell no.	Gender
19 March 2024 Pretoria National Botanical Gardens	National MLL Initiative Technical Design Workshop	<p>The objectives of the workshop were to:</p> <ul style="list-style-type: none"> <li>Understand the GEF 8 MLL project results framework &amp; planning requirements</li> <li>Update ourselves re the context &amp; key issues in each landscape.</li> <li>Discuss key concepts &amp; learn lessons with regards to what in a MLL is as well as reflect on good examples of landscape partnerships.</li> </ul>	Angus Tanner	WFA	angus@wfa.africa		Male
			Natasha Wilson	SANParks	natasha.wilson@sanparks.org		Female
			Brian Morris	MTPA	brian.morris@mtpa.co.za		Male
			Shela Patrickson	WWF-SA	spatrickson@wwf.org.za		Female
			Petronel Nieuwoudt	Care for Wild	<a href="mailto:petronel@careforwild.co.za">petronel@careforwild.co.za</a>		Female
			Ayaka Peter	SANBI	a.peter@sanbi.org.za		Female
			Kiera Schoeman	Consultant	kiera@ics-consulting.co.za	0636844682	Female
			Greg Martindale	Cons Outcomes	greg@conservation-outcomes.org		Male
			Mandy Cadman	Consultant	mandycadman88@gmail.com		Female
			Debbie Newton	Capabilities Consultant	Djnewton27@gmail.com	0828258921	Female
			Lala Steyn	Lead Consultant	lala@steynadvisory.co.za	0834178563	Female
			Anele Kumalo	SANParks	Anele.Kumalo@sanparks.org		Male
			Wenzile Giyose	SANParks	wenzile.giyose@sanparks.org		Female
			T Nethononda	DFFE	<a href="mailto:tnethononda@dffe.gov.za">tnethononda@dffe.gov.za</a>		Male
			Mkhululi Silandela	WWF	<a href="mailto:msilandela@wwf.org.za">msilandela@wwf.org.za</a>		Male
			Matthew Norval	WFA	<a href="mailto:Matthew@wfa.africa">Matthew@wfa.africa</a>		Male
			Malaika Koali-Lebona	ECPTA	Malaika.koali-lebona@ecpta.co.za		Male
			Nico Oosthuizen	BATOBIC/CFW	<a href="mailto:nico@mountainlands.co.za">nico@mountainlands.co.za</a>		Male
			Julia Levin	CSA	jlevin@conservation.org		Female
			Thembanani Nsibande	WWF-SA	tnsibande@wwf.org.za		Male
Angus Burns	WWF-SA	aburns@wwf.org.za		Male			
Norman Johnson	SANParks	<a href="mailto:Norman.Johnson@sanparks.org">Norman.Johnson@sanparks.org</a>		Male			
Reuben Ngwenya	SANParks	<a href="mailto:reuben.ngwenya@sanparks.org">reuben.ngwenya@sanparks.org</a>		Male			
Kevin McCann	Cons Outcomes	kevin@conservation-outcomes.org	0834470657	Male			
Azisa Parker	Consultant	trixieandi@gmail.com	0844559693	Female			
28 March 2024 and 19 June 2024 Online	MLL Capabilities	To gather lessons from GEF 5 PA project implementation	Tertius Carinus	SANParks	Tertius.Carinus@sanparks.org	0829082794	Male
			Debbie Newton	Capabilities Consultant	Djnewton27@gmail.com	0828258921	Female
2 April 2024 Online – MS Teams	Engagement with Park Manager of Mountain Zebra National Park	Obtain an initial understanding of the staff structure of the National Park	Evans Mkansi	SANParks	Evans.Mkansi@sanparks.org		Male
			Kevin McCann	Conservation Outcomes	kevin@conservation-outcomes.org	0834470657	Male
			Lala Steyn	Lead Consultant	lala@steynadvisory.co.za	0834178563	Female

Date and Venue	Description of Consultation	Objective of the Consultation	Participant Name	Organisation	Email	Tel/Cell no.	Gender
		(particularly the Park Forums) and potential opportunities for the MLL programme.					
2 April 2024 Online – MS Teams	Engagement with Park Manager of Addo Elephant National Park	Obtain an initial understanding of the staff structure of the National Park (particularly the Park Forums) and potential opportunities for the MLL programme.	Nick De Goede	SANParks	Nick.DeGoede@sanparks.org		Male
			Kevin McCann	Conservation Outcomes	kevin@conservation-outcomes.org	0834470657	Male
			Lala Steyn	Lead Consultant	lala@steynadvisory.co.za	0834178563	Female
3 April 2024 Online – MS Teams	Engagement with Park Manager of Camdeboo National Park	Obtain an initial understanding of the staff structure of the National Park (particularly the Park Forums) and potential opportunities for the MLL programme.	Brent Whittington	SANParks	brent.whittington@sanparks.org		Male
			Kevin McCann	Conservation Outcomes	kevin@conservation-outcomes.org	0834470657	Male
			Lala Steyn	Lead Consultant	lala@steynadvisory.co.za	0834178563	Female
8 April 2024 Addo National Park	Engagement with Addo staff and GEF 7 project team	To understand how ANP operates in the landscape and opportunities that the project design process can capitalise on	Kiera Schoeman	Consultant	kiera@ics-consulting.co.za	0636844682	Female
			Kevin McCann	Conservation Outcomes	kevin@conservation-outcomes.org	0834470657	Male
			Debbie Newton	Capabilities consultant	Djnewton27@gmail.com	0828258921	Female
			Kristal Maze	SANParks	Kristal.Maze@sanparks.org	0828900188	Female
			Azisa Parker	Consultant	trixieandi@gmail.com	0844559693	Female
			Greg Martindale	Conservation Outcomes	greg@conservation-outcomes.org		Male
			Lala Steyn	Lead Consultant	lala@steynadvisory.co.za	0834178563	Female
			Anban Padayachee	SANParks	Anban.padayachee@sanparks.org		Male
			Phunyuzwa Xhegwana	SANParks			Female
			Zimkhitha Zungula	SANParks	Zimkhitha.zungula@sanparks.org		Female
9 April 2024 HIVE Ecosystems		Understanding Hive Ecosystems priorities and operations	Naledi Mneno	SANParks	Naledi.mneno@sanparks.org	0710934572	Female
			Richard Strydom	HIVE Ecosystems			Male
			Lala Steyn	Lead consultant	lala@steynadvisory.co.za	0834178563	Female
			Azisa Parker	Consultant	trixieandi@gmail.com	0844559693	Female
			Kevin McCann	Cons outcomes	kevin@conservation-outcomes.org	0834470657	Male
Greg Martindale	Cons Outcomes	greg@conservation-outcomes.org		Male			

Date and Venue	Description of Consultation	Objective of the Consultation	Participant Name	Organisation	Email	Tel/Cell no.	Gender
			Kiera Schoeman	Consultant	kiera@ics-consulting.co.za	0636844682	Female
			Debbie Newton	Capabilities consultant	Djnewton27@gmail.com	0828258921	Female
			Kristal Maze	SANParks	Kristal.Maze@sanparks.org	0828900188	Female
9 April 2024 Plains of Camdeboo	Engagement with Angus Tanner of WFA	To understand WFA's work in the landscape	Angus Tanner	Wilderness Foundation Africa	<a href="mailto:angus@wfa.africa">angus@wfa.africa</a>	0836232563	Male
			Lala Steyn	Lead consultant	<a href="mailto:lala@steynadvisory.co.za">lala@steynadvisory.co.za</a>	0834178563	Female
			Azisa Parker	Consultant	<a href="mailto:trixieandi@gmail.com">trixieandi@gmail.com</a>	0844559693	Female
			Kevin McCann	Cons outcomes	<a href="mailto:kevin@conservation-outcomes.org">kevin@conservation-outcomes.org</a>	0834470657	Male
			Greg Martindale	Cons Outcomes	<a href="mailto:greg@conservation-outcomes.org">greg@conservation-outcomes.org</a>		Male
			Kiera Schoeman	Consultant	kiera@ics-consulting.co.za	0636844682	Female
			Debbie Newton	Capabilities consultant	Djnewton27@gmail.com	0828258921	Female
			Kristal Maze	SANParks	Kristal.Maze@sanparks.org	0828900188	Female
9 April 2024 MZNP Conference Room	Engagement with MZNP staff	To understand how MZNP operates in the landscape and opportunities that the project design process can capitalise on	Vuyani Dial	MZNP	<a href="mailto:Vuyani.dial@sanparks.org">Vuyani.dial@sanparks.org</a>		
			Wonga Pama	MZNP	<a href="mailto:Wonga.pama@sanparks.org">Wonga.pama@sanparks.org</a>		
			Lala Steyn	Lead consultant	<a href="mailto:lala@steynadvisory.co.za">lala@steynadvisory.co.za</a>	0834178563	Female
			Azisa Parker	Consultant	<a href="mailto:trixieandi@gmail.com">trixieandi@gmail.com</a>	0844559693	Female
			Kevin McCann	Cons outcomes	<a href="mailto:kevin@conservation-outcomes.org">kevin@conservation-outcomes.org</a>	0834470657	Male
			Greg Martindale	Cons Outcomes	<a href="mailto:greg@conservation-outcomes.org">greg@conservation-outcomes.org</a>		Male
			Kiera Schoeman	Consultant	kiera@ics-consulting.co.za	0636844682	Female
10 April 2024	MLL Capabilities engagement	Understand SANParks institutional project lead's thinking with regards to capabilities work	Kristal Maze	SANParks	Kristal.Maze@sanparks.org	0828900188	Female
			Debbie Newton	Capabilities consultant	Djnewton27@gmail.com	0828258921	Female
10 April 2024 CNP Board Room	Engagement with CNP staff	To understand how CNP operates in the landscape and opportunities that the project design process can capitalise on	Ayeza Veldtman	SANParks	<a href="mailto:ayeza.veldtman@sanparks.org">ayeza.veldtman@sanparks.org</a>		Female
			Songezo Gwayi	SANParks	<a href="mailto:songezo.gwayi@sanparks.org">songezo.gwayi@sanparks.org</a>		Male
			Matimba Maluleke	SANParks	<a href="mailto:matimba.maluleke@sanparks.org">matimba.maluleke@sanparks.org</a>		Male
10 April 2024 Graaf Reinet club	Initial engagement with the MZCPE executive team	To understand the operations and plans of the MZCPE in the greater Addo MLL with the view to identifying linkages for project design.	Paul Merrifield	MZCPE		0823796442	Male
			Lala Steyn	Lead Consultant	<a href="mailto:lala@steynadvisory.co.za">lala@steynadvisory.co.za</a>	0834178563	Female
			Geoff Kroon	MZCPE		0827777222	Male
			Jaco Loots	MZCPE		0836691374	Male
			Kevin McCann	Conservation Outcomes	<a href="mailto:kevin@conservation-outcomes.org">kevin@conservation-outcomes.org</a>	0834470657	Male
			Ulrich Schutte	MZCPE	<a href="mailto:projectmanager@mzcpe.co.za">projectmanager@mzcpe.co.za</a>	0662386264	Male
			Tertius Carinus	SANParks	<a href="mailto:Tertius.Carinus@sanparks.org">Tertius.Carinus@sanparks.org</a>	0829082794	Male
			Azisa Parker	Consultant	<a href="mailto:trixieandi@gmail.com">trixieandi@gmail.com</a>	0844559693	Female
Debbie Newton	Capabilities consultant	Djnewton27@gmail.com	0828258921	Female			

Date and Venue	Description of Consultation	Objective of the Consultation	Participant Name	Organisation	Email	Tel/Cell no.	Gender
			Greg Martindale	Conservation Outcomes	greg@conservation-outcomes.org	0828944412	Male
			Kristal Maze	SANParks	Kristal.Maze@sanparks.org	0828900188	Female
			Kiera Schoeman	Collective Impact	kiera@thecollectiveimpact.com	0636844682	Female
6 June 2024  The Boma, Gqeberha	Addo Stakeholder engagement workshop	To introduce the MLL concept to greater Addo stakeholders and to surface their inputs into three areas of interest for the two projects: - Conservation - Socio-economic - Finance	Kristen Davis		kristendavis999@gmail.com	0716300413	Female
			Rhian Berning	Eden to Addo	rhian@edentoaddo.co.za	0732325169	Female
			Mike Powell	Rhodes University	m.powell@ru.ac.za	0826501741	Male
			Japie Buckle	HIVE Ecosystems	japie.buckle@hiveecosystems.com	0828207083	Male
			Kerry Purnell	TNC	kerry@tnc.org	07661100127	Female
			Peter Chadwick	CLI	peter.ian.chadwick@gmail.com	0823734190	Male
			Wentzel Coetzer	Cons Outcomes	wentzel@conservation-outcomes.org	0725345914	Male
			Amelia Mampane	WRSA	amelia@wildsummitgroup.com	0812739065	Female
			Kristal Maze	SANParks	Kristal.Maze@sanparks.org	0828900188	Female
			John Hurter	WRSA	john@wildsummitgroup.com	0824870348	Male
			Jaden Schmidt	Red Cap Energy	jaden@red-cap.co.za	0824682392	Male
			Kevin McCann	Cons Outcomes	kevin@conservation-outcomes.org	0834470657	Male
			Naledi Mneno	SANParks	Naledi.mneno@sanparks.org	0710934572	Female
			Kevin Taylor	WESSA	kmtecologist@gmail.com	0794941092	Male
			Nick de Goede	SANParks	Nick.degoede@sanparks.org	0726211576	Male
			Azisa Parker	Consultant	trixieandi@gmail.com	0844559693	Female
			Danielle du Toit	EWT	danielled@ewt.org.za	0665384650	Female
			Liz Metcalfe	Living Lands	<a href="mailto:liz@livinglands.co.za">liz@livinglands.co.za</a>	0734624458	Female
			Danie Jordaan	Uni of Pretoria	danie@dosaka.co.za	0837852857	Male
			Jealous Mdaka	SANParks	Jealous.mdaka@sanparks.org	0835595335	Male
			Gary Koekemoer	WESSA Climate	garykzz@me.com	0716102884	Male
Lala Steyn	Lead Consultant	lala@steynadvisory.co.za	0834178563	Female			
			Kiera Schoeman	Consultant	kiera@ics-consulting.co.za	0636844682	Female
7 June 2024 Gqeberha	Addo MLL stakeholder engagement	Understand the role that Textile Exchange plays in the Addo MLL and any opportunities.	Bronwyn Botha	Textile Exchange			
			Kevin McCann	Cons outcomes	kevin@conservation-outcomes.org	0834470657	Male
14 June 2024 and 3 July  Online	MLL capabilities Irene is leading strategic process for implementing the 2040 Vision, including getting Board approval.	Purpose: to align our work with hers, get her advice on who we should meet, and how to move forward together.	Irene Sinovich	Project Manager: Vision 2040 (consultant)	irene.sinovich@sanparks.org	0810322598	Female
			Debbie Newton	Capabilities consultant	Djnewton27@gmail.com	0828258921	Female
			Lala Steyn	Lead Consultant	lala@steynadvisory.co.za	0834178563	Female

Date and Venue	Description of Consultation	Objective of the Consultation	Participant Name	Organisation	Email	Tel/Cell no.	Gender
14 June 2024 Online	Capabilities focus	Mahlodi has experience with learning platforms and catchment partnerships would be relevant	Mahlodi Tau	Chief Director: Biodiversity Information and Policy Advice	m.tau@sanbi.org.za		Male
			Debbie Newton	Capabilities consultant	Djnewton27@gmail.com	0828258921	Female
18 June 2024 De Kaap Conservancy	Barberton MLL Stakeholder consultation	To engage with the De Kaap conservancy, key landowners who could form part of the core of the Barberton MLL	Lynn Hes		lynnfhes@gmail.com		Female
			Melanie Jackaman		mel@gemden.co.za		Female
			Craig Jackaman		craig@gemden.co.za		Male
			Lonny Larsen		<a href="mailto:lonny@dana.co.za">lonny@dana.co.za</a>	0832291879	Female
			John Larsen			0832293549	Male
			Colin Steytler		Steytlercolin8@gmail	0780872108	Male
			Colin Wille		Colin.wille@icloud.com		Male
			Felix o'Flaherty		oflahertyfelix@gmail.com		Male
			Willem Bothma		<a href="mailto:Willemdbothma@gmail.com">Willemdbothma@gmail.com</a>		Male
			Linda Steytler		steytlerlinda@gmail.com		Female
			Barbara Jay		barbi.jay@gmail.com		Female
			J Jackaman				Male
			Tracey McBain		tracey@eggbox.com		Female
Bill Sears		Searsb@iafrica.com		Male			
18 June 2024 Care 4 Wild	Barberton MLL stakeholder engagement	Meat Naturally provided insight into their model and how it could potentially be applied in the Barberton landscape	Goodwill Ntini	Meat naturally Africa	Mntozimelentinicg@gmail.com		Male
			Chris DeBruno Austin	CFW	Chris.austin@kishugu.com		Male
			Greg Martindale	Cons Outcomes	greg@conservation-outcomes.org		Male
			Azisa Parker	Independent	trixieandi@gmail.com	0844559693	Female
			Kiera Schoeman	Collective Impact	kiera@thecollective-impact.com	0636844682	Female
			Edmore Masaire	Meat Naturally Africa	edmore@meatnaturallyafrica.com		Male
19 June 2024 Chamber of Business	Barberton MLL Stakeholder consultation	To engage with the Croc River Valley and Chariessa conservancies, key landowners who could form part of the core of the Barberton MLL	Cobus Raath	WildlifeVets.com	cobus@wildlifevets.com		Male
			Mark Wagner	Chariessa Conservancy	markwagner26.mw@gmail.com		Male
			Jacques Goosen	CRGC	jacques@sanhu.co.za		Male
			Chris DeBruno Austin	CFW	Chris.austin@kishugu.com		Male
			Greg Martindale	Cons Outcomes	greg@conservation-outcomes.org	0828044421	Male
			Azisa Parker	Independent	trixieandi@gmail.com	0844559693	Female
			Linda Grimbeek	KLCBT	linda@klcvt.co.za		Female
			Jerry Mkhathsha	Game Farm	jerrymkha@gmail.com		Male
			Kiera Schoeman	Collective Impact	kiera@thecollectiveimpact.com	0722973508	Female
			Cleve Crossling	Chariessa Conservancy		0836309309	Male

Date and Venue	Description of Consultation	Objective of the Consultation	Participant Name	Organisation	Email	Tel/Cell no.	Gender
			Etienne de Villiers	Chariessa Conservancy		0828802463	Male
19 June 2024 Care 4 Wild	Barberton MLL Stakeholder consultation	To engage with Care for Wild and gain insight into their operations in the landscape as well as the vision for the MLL.	Azisa Parker	Independent	trixieandi@gmail.com	0844559693	Female
			Kiera Schoeman	Collective Impact	kiera@thecollectiveimpact.com	0722973508	Female
			Greg Martindale	Conservation Outcomes	greg@conservation-outcomes.org	0828044421	Male
			Chris DeBruno Austin	CFW	Chris.austin@kishugu.com		Male
			Petronel Nieuwoudt	CFW	petronel@careforwild.co.za		Female
			Ferdie Terblanche	CFW	ferdieterblanche@gmail.com		Male
19 June 2024 Online	MLL Capabilities	To engage with CSA CEO to gather her inputs regarding capabilities	Julia Levin	CSA/CI		27 84 8788 483	female
			Debbie Newton	Capabilities consultant	Djnewton27@gmail.com	0828258921	Female
19 June 2024	MLL Capabilities	To engage with WWF regarding the capabilities work in the Eastern Grasslands MLL	Themba Nsibande	WWF – Grasslands			Male
			Debbie Newton	Capabilities consultant	Djnewton27@gmail.com	0828258921	Female
19 June 2024 Drostdy Hotel, Graaff Reinet	Addo MLL stakeholder engagement	Obtain an understanding of the dynamics of Graaff Reinet and potential financing opportunities	Johan Boucher		johan@Camdeboofarms.com		Male
			Kevin McCann	Cons outcomes	kevin@conservation-outcomes.org	0834470657	Male
			Lala Steyn	Lead Consultant	lala@steynadvisory.co.za	0834178563	Female
			Kristal Maze	SANPARKS	Kristal.Maze@sanparks.org		Female
20 June 2024 SANParks	Internal engagement with SANParks CFO	To brief CFO and her team with on the GEF and GBFF projects	Pretty Makukule (CFO)	SANPARKS			Female
			Rebecca Pillay (Corporate Finance)	SANPARKS			Female
			Howard Hendricks	SANPARKS			Male
			Kristal Maze	SANPARKS	Kristal.Maze@sanparks.org		Female
			Mpumi Ndebele (Resource Mobilisation)	SANPARKS			male
			Neo Ngobeni (Finance)	SANPARKS			
19 June 2024 and 2 July 2024	MLL capabilities/ due diligence	Briefing re the project and DD.	Annetjie Drent	SANParks	annetjie.drent@sanparks.org	0812167129	Female
			Debbie Newton	Capabilities consultant	Djnewton27@gmail.com	0828258921	Female

Date and Venue	Description of Consultation	Objective of the Consultation	Participant Name	Organisation	Email	Tel/Cell no.	Gender
19 June 2024 and 25 June 2024	MLL capabilities/ Due diligence	Briefing re the project and DD.	Nnaniki Rampedi	SANParks GM SCM	nnaniki.rampedi@sanparks.org	0796742881	Female
			Debbie Newton	Capabilities consultant	Djnewton27@gmail.com	0828258921	Female
19 June 2024 and 2 July 2024	MLL capabilities/ Due diligence	Briefing re the project and DD.	Hanlie Schoeman	SANParks Enterprise and Risk man	hanlie.schoeman@sanparks.org	0762773285	female
			Debbie Newton	Capabilities consultant	Djnewton27@gmail.com	0828258921	Female
20 June 2024  Derek Light offices, Graaff Reinet	Addo MLL stakeholder engagement –Dr Beyers Naude Municipality	Brief the Dr Beyers Naude Municipality	Kristal Maze	SANPARKS	Kristal.Maze@sanparks.org		Female
			Lala Steyn	Lead Consultant	lala@steynadvisory.co.za	0834178563	Female
			Kevin McCann	Cons outcomes	kevin@conservation-outcomes.org	0834470657	Male
			Brent Whittington	SANParks	brent.whittington@sanparks.org		Male
			Derek Light	Attorney	moira@dereklight.co.za		Male
			Willaim Syfers	Dr Beyers Naude Municipality - Mayor			Male
			Jimmy Joubert	Dr Beyers Naude Municipality - CFO			Male
			Hansie Hendriks	Dr Beyers Naude Municipality - COO			Male
20 June 2024 Graaff Reinet	Addo MLL stakeholder engagement –MZC PE Exco	Further engagement with the MZC PE Exco.	Kevin McCann	Cons outcomes	kevin@conservation-outcomes.org	0834470657	Male
			Ulrich Schutte	MZCPE	projectmanager@mzcpe.co.za	0662386264	Male
			Tertius Carinus	SANParks	Tertius.Carinus@sanparks.org	0829082794	Male
			Paul Merifield	MZCPE		0823796442	Male
			Geoff Kroon	MZCPE		0827777222	Male
			Johan Bouwer		johan@Camdeboofarms.com		Male
21 June 2024 AgriEC offices in Gqeberha	Addo MLL stakeholder engagement – AgriEC, WRSA, Living Lands	Understand the role that AgriEC, WRSA and ECCMA is playing in the landscape and what opportunities exist.	Megan Maritz	Agri Eastern Cape	environment@agriec.co.za		Female
			John Hurter	WRSA	john@wildsummitgroup.com	0824870348	Male
			Justin Gird	Living Lands	justin@livinglands.co.za		Male
			Kevin McCann	Cons outcomes	kevin@conservation-outcomes.org	0834470657	Male
21 June 2024	MLL Capabilities	Gain insights about SANBI's work re capabilities and what can be learnt for the project.	Jenifer Zungu	SANBI	j.zungu@sanbi.org.za		female
			Debbie Newton	Capabilities consultant	Djnewton27@gmail.com	0828258921	Female
21 June 2024	MLL capabilities	Gain insights about SANParks strategy and what can be learnt for the project.	Jill Bunding-Venter	SANParks - Responsible for strategy and business performance			female
			Debbie Newton	Capabilities consultant	Djnewton27@gmail.com	0828258921	Female

Date and Venue	Description of Consultation	Objective of the Consultation	Participant Name	Organisation	Email	Tel/Cell no.	Gender
24 June 2024 Online (MS Teams)	Addo MLL stakeholder engagement –WFA	Understand the role that WFA can play in the implementation of the Addo MLL	Matthew Norval	Wilderness Foundation Africa	matthew@wfa.africa		Male
			Kevin McCann	Cons outcomes	kevin@conservation-outcomes.org	0834470657	Male
24 June 2024 Online (MS Teams)	Addo MLL stakeholder engagement –SWEP project	Understand the outcomes of the SWEP project and opportunity to obtain spatial data for the MLL	Matthew Child	SANBI	M.Child@sanbi.org.za		Male
			Kevin McCann	Cons outcomes	kevin@conservation-outcomes.org	0834470657	Male
24 June 2024	MLL capabilities	Understand what has been done with previous GEF funding re capabilities & SCM.	Candice Ebb	SANParks Resource Economist: Park Planning	candice.eb@Sanparks.org	083 354 0284	female
			Debbie Newton	Capabilities Consultant	Djnewton27@gmail.com	0828258921	Female
25 June 2024 and 3 July 2024	MLL capabilities/ due diligence	Completing certain aspects of the DD & consider SCM for the project.	Ernest Hlungwani	SANParks: SCM	Ernest.Hlungwani@sanparks.org		Male
			Debbie Newton	Capabilities Consultant	Djnewton27@gmail.com	0828258921	Female
25 June 2024 and 3 July 2024	MLL capabilities/ due diligence	Completing certain aspects of the DD.	Victor Shokane	SANParks Snr Man: Gov and Contracts Man	Victor.Shokane@sanparks.org		Male
			Debbie Newton	Capabilities Consultant	Djnewton27@gmail.com	0828258921	Female
25 June 2024	MLL capabilities/ due diligence	Understand the opportunities for linkages between what SANParks is doing and project.	Makgomo Umlaw	SANParks Head HCM	makgomo.umlaw@sanparks.org		
			Debbie Newton	Capabilities Consultant	Djnewton27@gmail.com	0828258921	Female
2 July 2024	MLL capabilities/ due diligence	Completing certain aspects of the DD.	Nicolene Hoogenboezem	SANParks Enterprise and Risk Man.	nicolene.hoogenboezem@sanparks.org	0825514053	Female
			Debbie Newton	Capabilities Consultant	Djnewton27@gmail.com	0828258921	Female
2 July 2024	MLL capabilities/ due diligence	Gain strategic inputs for the project.	Debbie Newton	Capabilities Consultant	Djnewton27@gmail.com	0828258921	Female
			Lala Steyn	Lead Consultant	lala@steynadvisory.co.za	0834178563	Female
			Dr Howard Hendriks	SANParks ME Conservation Services			Male
2 July 2024	MLL capabilities/ due diligence	Completing certain aspects of the DD.	Debbie Newton	Capabilities Consultant	Djnewton27@gmail.com	0828258921	Female
			Agatha Khunwane	SANParks	agatha.khunwane@sanparks.org		female
2 July 2024	MLL capabilities/ due diligence	Understand the opportunities for linkages between what	Debbie Newton	Capabilities Consultant	Djnewton27@gmail.com	0828258921	Female
			Siphokazi Bokwe	SANParks GM learning and Development and	siphokazi.bokwe@sanparks.org	0711205164	female

Date and Venue	Description of Consultation	Objective of the Consultation	Participant Name	Organisation	Email	Tel/Cell no.	Gender
		SANParks is doing and project.		Performance Management			
2 July 2024	MLL capabilities	To understand Green Matter's priorities with regards to capabilities development	Karen Vickers	Green Matter CEO	vickerskaren@hotmail.com		Female
			Debbie Newton	Capabilities Consultant	Djnewton27@gmail.com	0828258921	Female
3 July 2024 Pretoria	Mega living Landscapes Durable Finance Project meeting (GBFF)	Meeting with SANParks Finance Management to explain the Durable Finance Project and to gather their insights to inform project design.	Lala Steyn	Lead Consultant	lala@steynadvisory.co.za	0834178563	Female
			Mpumi Ndebele	SANParks GM Resource Mobilisation			Male
			Annetjie Drent	SANParks Snr Man Financial Control			Female
			Khethiwe Silubone	SANParks GM Finance			Female
			Shirley Kumalo	SANParks GM Finance			Female
			Nthabiseng Moeletsi	SANParks Senior Manager Resource Mobilisation			Female
			Neo Ngobeni	SANParks Snr Man Financial reporting			Female
			Busi Mazibuko	SANParks Snr Man Corp. Finance			Female
			Melusi Baloyi	Finance Consultant			Male
			Alvin Ngugi	Finance Consultant			Male
			Debbie Newton	Capabilities Consultant	Djnewton27@gmail.com	0828258921	Female
			Danny Govender	SANParks GM Sust Development			Female
			H Hendricks	SANParks ME CSD			Male
L. Sinovich	Project Manager Vision 2040			Female			
Pretty Makukule	SANParks CFO			Female			
3 July 2024 Pretoria	Mega living Landscapes Durable Finance Project meeting (GBFF)	To understand CI's thinking regarding Durable financing and what the project can learn from this.	Justine Ganness	CI and CSA Head: Finance			Female
			Alvin Ngugi	Finance Consultant			Male
			Lala Steyn	Lead Consultant	lala@steynadvisory.co.za	0834178563	Female
8 July 2024 online	Mega living Landscapes Durable Finance Project meeting	To gain strategic insights regarding durable financing and what the project can learn from this.	Mark Botha Lala Steyn Alvin Ngugi	Independent (Former RMB) Lead Consultant Finance Consultant			Male Female Male

Date and Venue	Description of Consultation	Objective of the Consultation	Participant Name	Organisation	Email	Tel/Cell no.	Gender
8 & 9 July 2024 Cape Research Centre Tokai, Cape Town	Situation Analysis debrief workshop	Presentation of situation analysis findings and planning next steps	Kristal Maze	SANPARKS	Kristal.Maze@sanparks.org		Female
			Natasha Wilson	SANParks	natasha.wilson@sanparks.org		Female
			Shela Patrickson	WWF-SA	spatrickson@wwf.org.za		Female
			Debbie Newton	Capabilities Consultant	Djnewton27@gmail.com	0828258921	Female
			Lala Steyn	Lead Consultant	lala@steynadvisory.co.za	0834178563	Female
			Alvin Ngugi	Finance Consult	alvin@kedari.co.za	0736251215	Male
			Melusi Baloyi	Finance Consult			Male
			Kevin McCann	Cons outcomes	kevin@conservation-outcomes.org	0834470657	Male
			Candice Ebb	SANParks Resource Economist: Park Planning	candice.eb@Sanparks.org	083 354 0284	female
			Greg Martindale	Cons Outcomes	greg@conservation-outcomes.org		Male
			Azisa Parker	Independent	trixieandi@gmail.com	0844559693	Female
			Kiera Schoeman	Collective Impact	kiera@thecollective-impact.com	0636844682	Female
			Angus Burns	WWF-SA	aburns@wwf.org.za		Male
Lauren Moos	SANParks	Lauren.Moos@sanparks.org		Female			
11 July 2024 Online	Capabilities	Engagement with SANBI regarding the Umgeni Ecological Infrastructure Partnership and lessons for designing MLL Hubs	Dr Pearl Gola	SANBI	n.gola@sanbi.org.za		Female
			Lungi Ndlovu	SANBI	n.ndlovu@sanbi.org.za		female
			Debbie Newton	Capabilities Consultant	Djnewton27@gmail.com	0828258921	Female
			Azisa Parker	Independent	trixieandi@gmail.com	0844559693	Female
12 July 2024	Capabilities	To understand SANBI's priorities with regards to capabilities development	Vivian Malema	SANBI: Biodiversity Education and People Empowerment	v.malema@sanbi.org.za	082 784 3277	Female
			Debbie Newton	Capabilities Consultant	Djnewton27@gmail.com	0828258921	Female
16 July 2024 online	MLL – all landscapes	To obtain input from BirdLife South Africa on their activities in the MLLs and where possible opportunities exist.	Hanneline Smit-Robinson	BirdLife South Africa	hanneline.smit-robinson@birdlife.org.za		Female
			Ernst Retief	BirdLife South Africa	ernst.retief@birdlife.org.za		Male
			Samantha Ralston	BirdLife South Africa	Samantha.ralston@birdlife.org.za		Female
			Linda van der Heever	BirdLife South Africa	Linda.vdheever@birdlife.org.za		Female
			Carina Pienaar	BirdLife South Africa	Kirsten.day@birdlife.org.za		Female
			Kyle Lloyd	BirdLife South Africa	Kyle.lloyd@birdlife.org.za		Male
			Kirsten Day	BirdLife South Africa	Kirsten.day@birdlife.org.za		Female
			Marlize Muller	BirdLife South Africa	Marlize.muller@birdlife.org.za		Female
			Martin Taylor	BirdLife South Africa	Martin.taylor@birdlife.org.za		Male
			Nandipha Thobela	BirdLife South Africa	Nandi.thobela@birdlife.org.za		Female
			Justin Henry	BirdLife South Africa	<a href="mailto:Justin.henry@birdlife.org.za">Justin.henry@birdlife.org.za</a>		Male

Date and Venue	Description of Consultation	Objective of the Consultation	Participant Name	Organisation	Email	Tel/Cell no.	Gender
23 July 2024 Online – MS Teams	WWF Intro to the PFP mechanism & process	The meeting aimed to discuss the Project Finance for Permanence (PFP) model and its application globally, with insights from Katie at WWF US.	Katie Zdilla,	WWF US			Female
			Chinn Megan,	WWF US			Female
			Deon Nel,	WWF SA			Male
			Kristal Maze,	SANParks			Female
			Candice Eb,	SANParks			Female
			Lala Steyn	Lead Consultant			Female
			Alvin Ngugi	Finance Consultant			Male
23 July 2024 Online – MS Teams	GEF8/GBFF - SANParks Tourism Agenda discussion	Discussion of tourism in the context of the MLLS and the possible direction for SANParks.	Candice Eb	SANParks			Female
			Lala Steyn	Lead Consultant			Female
			Kiera Schoeman	SE Consultant			Female
			Alvin Ngugi	Finance Consultant			Male
25 July 2024 Online – MS Teams	Insights Meeting on Establishing and Managing a Conservation Trust Fund/Credits	The meeting aimed to gather insights into the operations, strategies, and challenges of the Table Mountain Fund (TMF) from Kerry, its head.	Kerry Maree	Table Mountain Fund			Female
			Lala Steyn	Lead Consultant			Female
			Alvin Ngugi	Finance Consultant			Male
25 July 2024 Online – MS Teams	Meeting with WWF SA (Deon and Shela)	The meeting sought to get thoughts from WWF SA on potential financial mechanisms and strategies for supporting the Mega Living Landscapes (MLLs) initiative.	Deon Nel	WWF SA			Male
			Shela Patrickson,	WWF SA			Female
			Candice Eb	SANParks			Female
			Lala Steyn	Lead Consultant			Female
			Alvin Ngugi	Finance Consultant			Male
29 July 2024 Online – MS Teams	Meeting With Nedbank Sustainable Finance Solutions Team	The meeting aimed to explore potential sustainable financing mechanisms for SANParks' Mega Living Landscapes projects with the Nedbank team.	Johan Malan,	Nedbank SFS			Male
			Daniel Jooste,	Nedbank SFS			Male
			Danny Govender	SANParks			Female
			Lala Steyn	Lead Consultant			Female
			Alvin Ngugi	Finance Consultant			Male

Date and Venue	Description of Consultation	Objective of the Consultation	Participant Name	Organisation	Email	Tel/Cell no.	Gender
30 July 2024	Capabilities/ Institutional/ governance arrangement	To reflect on lessons from GEF5 and GEF6 governance and institutional arrangements to inform project design	Kristal Maze	SANPARKS	Kristal.Maze@sanparks.org		Female
			Jenifer Zungu	SANBI	j.zungu@sanbi.org.za		female
			Azisa Parker	Consultant	trixieandi@gmail.com	0844559693	Female
			Debbie Newton	Consultant	Djnewton27@gmail.com	0828258921	Female
			Lala Steyn	Lead consultant	lala@steynadvisory.co.za	0834178563	Female
31 July 2024 SANParks Head Office – Groen Kloof	Financial Capabilities for MLLs	Current SANParks financial structures as well as gaps and capabilities required for efficient financial management of MLLs.	Rebecca Pillay	SANParks			Female
			Busisiwe	SANParks			Female
			Alvin Ngugi	Finance Consultant			Male
31 July 2024 Online	Capabilities and Due Diligence	Obtain input from SANParks COO on capabilities and Due Diligence work	Lize McCourt	SANParks COO	Lize.McCourt@sanparks.org		Female
			Debbie Newton	Capabilities Consultant	Djnewton27@gmail.com	0828258921	Female
2 August 2024 Online – MS Teams	Meeting with RMB	Understand their current direction with biodiversity bonds and other sustainable financing mechanisms.	Martin Potgieter	RMB			Male
			Beth Rivett-Carnac	RMB			Female
			Lala Steyn	Lead Consultant			Female
			Alvin Ngugi	Finance Consultant			Male
2 August 2024 Online – MS Teams	Meeting to Discuss Rhino and Biodiversity Bond Initiatives.	To understand the potential of bonds and other financing mechanisms for biodiversity conservation, particularly in the context of the MLLs.	Elisson Wright	World Bank			Male
			Lala Steyn	Lead Consultant			Female
			Alvin Ngugi	Finance Consultant			Male
2 August 2024 Online – MS Teams	Meeting with The Nature Conservancy.	To explore expertise of TNC in areas such as Project Finance for Permanence (PFP), philanthropic finance,	Loma Powrie	TNC US			Female
			Louise Stafford	TNC SA			Female
			Lala Steyn	Lead Consultant			Female

Date and Venue	Description of Consultation	Objective of the Consultation	Participant Name	Organisation	Email	Tel/Cell no.	Gender
		and other innovative models that could be leveraged to ensure the financial sustainability of MLL projects.	Alvin Ngugi	Finance Consultant			Male
6 August 2024 Online – MS Teams	Meeting with Sustainable Finance Coalition.	To understand financial solutions in the conservation space through the lens of the Sustainable Finance Coalition.	Candice Stevens	SFC			Female
			Lala Steyn	Lead Consultant			Female
			Alvin Ngugi	Finance Consultant			Male
6 August 2024 Online – MS Teams	Meeting with the Endangered Wildlife Trust team.	To discuss strategic inputs regarding finance opportunities, particularly focusing on lessons learned from their carbon projects and the Business and Biodiversity Network they facilitate.	Yolan Friedmann	EWT			Female
			Ian Little	EWT			Male
			Kish Chetty	EWT			Male
			Candice Eb	SANParks			Female
			Lala Steyn	Lead Consultant			Female
			Alvin Ngugi	Finance Consultant			Male
6 August 2024 Online – MS Teams	SANParks (financial) capabilities discussion	Discuss the current SANParks financial structures as well as gaps and capabilities required for efficient financial management of MLLs.	Annetjie Drent,	SANParks			Female
			Dipuo Masenya	SANParks			Female
			Debbie Newton	Consultant			Female
			Alvin Ngugi	Finance Consultant			Male
7 August 2024 Online – MS Teams	Meeting with UNDP BioFin - Nokuthula Mhene	To gather insights on finance opportunities and mechanisms that could support the MLLs project	Nokuthula Mhene	UNDP			Female
			Alvin Ngugi	Finance Consultant			Male
7 August 2024 Online – MS Teams	Meeting with National Business Initiative (NBI)	To gather insights and experiences from the NBI on engaging big businesses and parastatals in conservation efforts,	Alex McNamara,	NBI			Male
			Alvin Ngugi	Finance Consultant			Male

Date and Venue	Description of Consultation	Objective of the Consultation	Participant Name	Organisation	Email	Tel/Cell no.	Gender
		particularly within the context of MLLs.					
12 August 2024 Kruger Vet Service	Barberton MLL	To engage with Senior Kruger NP officials to secure their inputs on the Barberton – Makhonjwa MLL	Kevin McCann	Conservation Outcomes	kevin@conservation-outcomes.org	0834470657	Male
			Angus Burns	WWF-SA	aburns@wwf.org.za	0844001234	Male
			Edmond Odaba	WWF-US	Edmond.Odaba@wwfus.org	254722961963	Male
			Alvin Ngugi	Kedari	alvin@kedari.co.za	0736251215	Male
			Portia Sambo	SANParks	Portia.sambo@sanparks.org	0798715709	Female
			Ntombizodwa Ngubeni	SANParks	Ntombizodwa.ngubeni@sanparks.org	0823196473	
			Isabel Filiberto	WWF	Isabel.filiberto@wwfus.org	+12027796942	Female
			Lala Steyn	Lead consultant	lala@steynadvisory.co.za	0834178563	Female
			Kiera Schoeman	Collective Impact	kiera@thecollectiveimpact.com	0636844682	Female
			Shela Patrickson	WWF	spatrickson@wwf.org.za	0782932841	Female
			Deon Nel	WWF	dnel@wwf.org.za	0768678119	Male
			Cathy Greaver	SANParks	Cathy.greaver@sanparks.org	0842056866	Female
			Azisa Parker	Consultant	trixieandi@gmail.com	0844559693	Female
			Jeff Manuel	SANParks	Jeffrey.manuel@sanparks.org	0847225922	Male
			Kristal Maze	SANParks	Kristal.Maze@sanparks.org	0828900188	Female
Greg Martindale	Conservation Outcomes	greg@conservation-outcomes.org	082804412	Male			
Johan Malan	SANParks	Johan.malan@sanparks.org	0829082689	Male			
13 August 2024 Skukuza Research Centre	Team meeting with WWF and SANParks	For larger project team to engage on project design following situation analysis development	Jeff Manuel	SANParks	Jeffrey.manuel@sanparks.org	0847225922	Male
			Kevin McCann	Conservation Outcomes	kevin@conservation-outcomes.org	0834470657	Male
			Greg Martindale	Conservation Outcomes	greg@conservation-outcomes.org	082804412	Male
			Deon Nel	WWF	dnel@wwf.org.za		Male
			Angus Burns	WWF	aburns@wwf.org.za	Not provided	Male
			Isabel Filiberto	WWF	Isabel.filiberto@wwfus.org	+12027796942	Female
			Alvin Ngugi	Kedari	alvin@kedari.co.za	0736251215	Male
			Kristal Maze	SANParks	Kristal.Maze@sanparks.org	0828900188	Female
			Kiera Schoeman	Collective Impact	Not provided	063684482	Female
			Azisa Parker	Independent Consultant	trixieandi@gmail.com	0844559693	Female
			Shela Patrickson	WWF	spatrickson@wwf.org.za	Not provided	Female
			Edmond Odaba	WWF-US	Edmond.Odaba@wwfus.org	254722961963	Male
			Lala Steyn	Lead design team	lala@steynadvisory.co.za	0834178563	Female
14 August 2024 Care for Wild PM	Introductory engagement with between project design team and Care for Wild PM	To understand CfW's work around Barberton	Shela Patrickson	WWF	<a href="mailto:spatrickson@wwf.org.za">spatrickson@wwf.org.za</a>	Not provided	Female
			Edmond Odaba	WWF-US	Edmond.Odaba@wwfus.org	254722961963	Male
			Edmore Masaire	Meat Naturally	edmore@meatnaturallyafrica.com	0613793201	Male
			Mark Ngwenyama	CFW/BATOBIC/LOMSHIYO	mark@batobic.co.za	0795014249	Male

Date and Venue	Description of Consultation	Objective of the Consultation	Participant Name	Organisation	Email	Tel/Cell no.	Gender
	RE: Barberton - Makhonjwa MLL		Daniel Erasmus	Meat Naturally	daniel@meatnaturallyafrica.com	0845676383	Male
			Kristal Maze	SANParks	Kristal.Maze@sanparks.org	0828900188	Female
			Kevin McCann	Conservation Outcomes	kevin@conservation-outcomes.org	0834470657	Male
			Angus Burns	WWF	aburns@wwf.org.za	Not provided	Male
			Nico Oosthuizen	BATOBIC/CfW	nico@mountainlands.co.za	Not provided	Male
			Kiera Schoeman	Collective Impact	Not provided	063684482	Female
			Lala Steyn	Lead design team	lala@steynadvisory.co.za	0834178563	Female
			Jeff Manuel	SANParks	Jeffrey.manuel@sanparks.org	0847225922	Male
			Greg Martindale	Conservation Outcomes	greg@conservation-outcomes.org	082804412	Male
			Isabel Filiberto	WWF	Isabel.filiberto@wwfus.org	+12027796942	Female
			Deon Nel	WWF	dnel@wwf.org.za		Male
14 August 2024 MTPA Boardroom, Mbombela AM	To engage with relevant stakeholders in Mpumalanga regarding the proposed Greater Kruger (Barberton/Makhonjwa) MLL	To engage with relevant stakeholders in Mpumalanga regarding the proposed Greater Kruger (Barberton/Makhonjwa) MLL	Bheki Nkosi	MTPA	Bheki.Nkosi@mtpa.co.za	0721672603	Male
			Mbali Themba	MTPA	Mbali.themba@mtpa.co.za	0711211036	Female
			Kevin McCann	Conservation Outcomes	kevin@conservation-outcomes.org	0834470657	Male
			Mervyn Lotter	MTPA	mervynl@mtpa.co.za	0832197618	Male
			Angus Burns	WWF	aburns@wwf.org	0844001234	Male
			Edmore Masaire	Meat Naturally	edmore@meatnaturallyafrica.com	0613793201	Male
			Greg Martindale	Conservation Outcomes	greg@conservation-outcomes.org	082804412	Male
			Chris Austin	CfW	Chris.austin@kishugu.com	084590504	Male
			Petronel Nieuwoudt	CfW	petronel@careforwild.co.za	0828258735	Female
			Etienne de Villiers	Paranie Nature Reserve	Etienne@afrisure.net	0828801463	Male
			Brian Morris	MTPA	Brian.morris@mtpa.co.za	0845797979	Male
			Shela Patrickson	WWF	spatrickson@wwf.org.za	0782932841	Female
			Lala Steyn	Lead design team	lala@steynadvisory.co.za	0834178563	Female
			Mark Ngwenyama	CFW/BATOBIC/LOMSHIYO	mark@batobic.co.za	0795014249	Male
			Isabel Filiberto	WWF	Isabel.filiberto@wwfus.org	+12027796942	Female
			Deon Nel	WWF	dnel@wwf.org.za	0768678119	Male
			Thokozani Nkhosi	Lomshiyo T/C	inkosigroup@gmail.com	0827348399	Male
			Alvin Ngugi	Kedari	alvin@kedari.co.za	0736251215	Male
			Azisa Parker	Independent Consultant	trixieandi@gmail.com	0844559693	Female
			Edmond Odaba	WWF-US	Edmond.odaba@wwfus.org	254722961963	Male
Bongani Dhlamini	Lomshiyo T/C	Bdhlamini993@gmail.com	0798083270	Male			
			Nico Oosthuizen	BATOBIC/BWR/CfW	nico@mountainlands.co.za	0845511659	Male

Date and Venue	Description of Consultation	Objective of the Consultation	Participant Name	Organisation	Email	Tel/Cell no.	Gender
			Kiera Schoeman	Collective Impact	<a href="mailto:kiera@thecollective-impact.com">kiera@thecollective-impact.com</a>	0636844682	Female
			Jeff Manuel	SANParks	Jeffrey.manuel@sanparks.org	0847225922	Male
15 August 2024 Chief's Kraal, Lomshiyo Community	To engage with Chief Dhlamini and his advisors regarding the Barberton- Makhonjwa MLL	To secure the Chief's inputs to and support for the project's activities	Kiera Schoeman	Collective Impact	Not provided	063684482	Female
			Goodwill Ntini	Meat Naturally Africa	Not provided	0763550886	Male
			Kevin McCann	Conservation Outcomes	Not provided	0834470657	Male
			Daniel Erasmus	MNA	Not provided	0845678383	Male
			Edmore Masaine	MNA	Not provided	0613793201	Male
			Jeff Manuel	SANParks	Jeffrey.Manuel@sanparks.org	0847225922	Male
			Edmond Odaba	WWF-US	Not provided	254722961963	Male
			Deon Nel	WWF	dnel@wwf.org.za	Not provided	Male
			Alvin Ngugi	Kedari	alvin@kedari.co.za	Not provided	Male
			Tikhontele Dhlamini	Chief: Lomshiyo Comm	Not provided	Not provided	Male
			Scebile Dhlamini	Lomshiyo community	Not provided	Not provided	Female
			Celiwe Sibanda	Not provided	Not provided	Not provided	Female
			Kristal Maze	SANParks	Kristal.Maze@sanparks.org	0828900188	Female
			Isabel Filiberto	WWF	Isabel.filiberto@wwfus.org	+12027796942	Female
			Petronel Nieuwoudt	CfW	Not provided	Not provided	Female
			Lala Steyn	Design team	lala@steynadvisory.co.za	0834178563	Female
			Shela Patrickson	WWF	Not provided	0782932841	Female
			Azisa Parker	Consultant	trixieandi@gmail.com	0844559693	Female
			Nico Oosthuizen	BATOBIC/BWR/CfW	nico@mountainlands.co.za	Not provided	Male
			Chris Austin	CfW	Chris.austin@kishugu.com	Not provided	Male
Xolani Nkosi	Lomshiyo	Xolaniking099@gmail.com	Not provided	Male			
15 August 2024 Mandela village Women's Group 1	Gender assessment Barberton – Makhonjwa MLL	To understand the gender dynamics in the Greater Kruger (Barberton/Makhonjwa) MLL as well as possible project interventions to be included in Gender Action Plan	Azisa Parker	Consultant	<a href="mailto:trixieandi@gmail.com">trixieandi@gmail.com</a>	0844559693	Female
			Lizzy Nkosi	Mlambongwane	Not provided	0637408156	Female
			Selina Masuku	Mlambongwane	Not provided	0796789384	Female
			Hellen Mtembu	Mlambongwane	Not provided	0649177944	Female
			Else Mshaba	Mlambongwane	Not provided	0726495562	Female
			Zandile Nxumalo	Care for wild	Not provided	0728593597	Female
			Nomsa Shabangu	Mlambongwane	Not provided	0726458957	Female
			Anatacia Bolne	Mlambongwane	Not provided	0649177944	Female
			Edmarie Coriega	Mlambongwane	Not provided	0673967029	Female
			Lindiwe Themba	Mlambongwane	Not provided	0727018301	Female
			Sonto Khoza	Mlambongwane	Not provided	0791484660	Female
			Jabulile Msibi	Mlambongwane	Not provided	0607272417	Female

Date and Venue	Description of Consultation	Objective of the Consultation	Participant Name	Organisation	Email	Tel/Cell no.	Gender
			Sarah Shong	Mlambongwane	Not provided	0608608390	Female
			Thembisile Khoza	Mlambongwane	Not provided	0761186447	Female
16 August 2024 Mandela Village Women's Group 2	Gender assessment Barberton – Makhonjwa MLL	To understand the gender dynamics in the Greater Kruger (Barberton/Makhonjwa) MLL as well as possible project interventions to be included in Gender Action Plan	Azisa Parker		<a href="mailto:trixieandi@gmail.com">trixieandi@gmail.com</a>	0844559693	Female
			Zandile Nxumalo		Not provided	0728593597	Female
			Thobile Madilele		Not provided	0729695602	Female
			Esnath Nkosi		Not provided	067354044	Female
			Andile Nkosi		Not provided	0769558551	Female
			Samariya Motse		Not provided	0769558551	Female
			Phethile Nkosi		Not provided	0791086323	Female
			Gabishe Mnisi		Not provided	0724485715	Female
			Esther Maziya		Not provided	0726150798	Female
			Lindiwe Makamo		Not provided	0723101497	Female
			Tengetile Magagula		Not provided	Not provided	Female
Dudu Gwebu		Not provided	0665616529	Female			
16 August 2024 Noordkaap Village Youth Group	Gender/ Youth assessment Barberton – Makhonjwa MLL	To understand the gender dynamics in the Greater Kruger (Barberton/Makhonjwa) MLL as well as possible project interventions to be included in Gender Action Plan	Zandile Nxumalo		Not provided	0728593597	Female
			Rinah Mashele		Not provided	0711057013	Female
			Nontobeko Mhlabane		Not provided	0769229351	Female
			Jabulile Zimba		<a href="mailto:JaBulilezimba2@gmail.com">JaBulilezimba2@gmail.com</a>	0760664278	Female
			Nobuhle Sambo		Not provided	0760749089	Female
			Zethu Nkosi		Not provided	0725404091	Female
			Sakhile Khumalo		Not provided	0715127324	Female
			Siphiwe Fakudze		Not provided	0727842017	Female
			Nesta Ndhlovu		Not provided	0636691083	Female
			Christina Sithole		Not provided	0790713188	Female
			Nomvula Buthelezi		Not provided	0709183098	Female
Zandi Mhlabane		Not provided	0703158869	Female			
19 August 2024	Capabilities	To understand SANParks EPWP work and how this relates to the project.	Carlo de Kock	SANParks EPWP Implementation Manager	<a href="mailto:carlo.dekock@sanparks.org">carlo.dekock@sanparks.org</a>		Male
			Debbie Newton	Capabilities Consultant	<a href="mailto:Djnewton27@gmail.com">Djnewton27@gmail.com</a>	0828258921	Female
23 August 2024	Capabilities	To understand SANBI's social and organisational learning	Tanya Layne	Principal specialist social and organisational learning	<a href="mailto:t.layne@sanbi.org.za">t.layne@sanbi.org.za</a>	083 675 1887	female
			Debbie Newton	Capabilities Consultant	<a href="mailto:Djnewton27@gmail.com">Djnewton27@gmail.com</a>	0828258921	Female

Date and Venue	Description of Consultation	Objective of the Consultation	Participant Name	Organisation	Email	Tel/Cell no.	Gender
		work and relevance to project					
26 August 2024, SANParks HQ Boardroom	Sustainable Finance Stakeholder engagement	To bring together finance experts and key stakeholders to collaboratively design project activities across and in each of the 3 Mega Living Landscapes (MLLs) under the Global Biodiversity Framework Fund (GBFF) project.	Irene Sinovich	SANPARKS	irene.sinovich@sanparks.org	0810322598	female
			Kish Chetty	Endangered Wildlife Trust	kishc@ewt.org.za	0825161046	male
			Kethiwe Silubane	SANPARKS	khethiwe.silubane@sanparks.org	0795074666	female
			Skumsa Ntshanga	SANPARKS	skumsa.ntshanga@sanparks.org	0824130166	female
			Nokutula Mhene	SANPARKS	nokutula.mhene@undp.org	0605241990	female
			Danny Govender	SANPARKS	danny.govender@sanparks.org	0845050844	female
			Johan Malan	Nedbank CIB	johanma@nedbank.co.za	0605624727	male
			Beth Rivett-Carnac	RMB	beth.rivett-carnac@rmb.co.za	0768326684	female
			Kristal Maze	SANPARKS	kristal.maze@sanparks.org	0828900188	female
			Howard Hendricks	SANPARKS	howard.hendricks@sanparks.org	0836405296	male
			Kevin McCann	Conservation Outcomes	kevin@conservationoutcomes.org	0834470657	male
			Kerry Maree	TMF	not provided	not provided	female
			Kyra Lunderstedt	Sustainable Finance Coalition	kyra@sfcoalition.org.za	0725644242	female
			Shahan Chundra	CSA	schundra@gmail.com	0609706633	male
			Justine Ganess	CSA	jganess@conservation.org	0781875058	female
			Alvin Ngugi	KEDARI	alvin@kedari.co.za	0736251215	male
			Lala Steyn	Design Team	lala@steynadvisory.co.za	0834178563	female
			Rebecca Pillay	SANPARKS	r.pillay@sanparks.org	0749017537	female
			Deon Nel	WWF	dnel@wwf.org.za	0768678119	male
			Louise Stafford	TNC	louise.stafford@tnc.org	0823250753	female
			Shirley Khumalo	SANPARKS	Shirley.khumalo@sanparks.org	0825006966	female
			Julia Levin	CSA	jlevin@conservation.org	0848788483	female
Pearl Tladi	SANPARKS	pearl.ramaboya@sanparks.org	0762453068	female			
Azisa Parker	Consultant	trixieandi@gmail.com	0844559693	female			
Lize McCourt	SANPARKS	lize.mccourt@sanparks.org	0825640401	female			
Kaula Nyilenda	SANPARKS	kaula.nyilenda@sanparks.org	0721010121	female			
28 August 2024, SANParks Groenkloof Boardroom	SANParks Executives Oversight meeting	provide an update on progress made in the design of the two interrelated projects; to seek guidance from SANParks leadership on	Irene Sinovich	SANPARKS	irene.sinovich@sanparks.org	0810322598	female
			Howard Hendricks	SANPARKS	howard.hendricks@sanparks.org	0836405296	male
			Property Mokoena	SANPARKS	Property.mokoena@sanparks.org	0842218201	male
			Shirley Khumalo	SANPARKS	shirley.khumalo@sanparks.org	0725006916	female

Date and Venue	Description of Consultation	Objective of the Consultation	Participant Name	Organisation	Email	Tel/Cell no.	Gender
		key interventions and selection criteria proposed that will facilitate the ongoing design and development of project documents.	Kristal Maze	SANPARKS	kristal.maze@sanparks.org	0828900188	female
			Lala Steyn	Design Team	lala@steynadvisory.co.za	0834178563	female
			Azisa Parker	Design Team	trixieandi@gmail.com	0844559693	female
			Skumsa Ntshanga	SANPARKS	skumsa.ntshanga@sanparks.org	0824130166	female
2 September 2024, Women's Group Upper Tstitsana, Kuthoano	Gender Assessment Eastern Grasslands	To understand the gender dynamics in the Eastern Grasslands MLL as well as possible project interventions to be included in Gender Action Plan	Azisa Parker	Consultant	Not provided	084 455 9693	female
			Asiphe Jingisa	SANPARKS	Not provided	061 840 6928	female
			Noamen Stefansi	Ndingeni	Not provided	Not provided	female
			Nophumlani Ndzila	Ndingeni	Not provided	066 063 4774	Female
			Nothozamile Komanisi	Mabalane	Not provided	071 786 9234	female
			Bulelwa Mrabalala	Kuthoano	Not provided	078 632 0168	female
			Sibongile Sejosemgoe	Sakhuthe	Not provided	083 239 1296	female
			Nomzwandile Konana	Kuthoano	Not provided	079 602 4587	female
			Nosibongiseni Minyela	Ndingeni	Not provided	078 949 4178	female
			Molusapho Mdeleiyi	Mabalane	Not provided	076 633 8780	female
			Letticia Ndobongwana	Kuthoano	Not provided	071 183 4338	female
			Ntsilion Klopper	Ndingeni	Not provided	083 336 4287	female
			Nowelile Ndzile	Ndingeni	Not provided	Not provided	female
			Nolawuthi Dyasi	Ndingeni	Not provided	078 608 5359	female
			Noluvo Masangweni	Famini	Not provided	083 867 6807	female
			Nosandiseni Duna	Komkhulu	Not provided	083 897 6651	female
			Nothobani Rayi	Ndingeni	Not provided	071 785 1307	female
			Nosayini Gam	Kutlwanong	Not provided	Not provided	female
Lulama Bhadela	Famini	Not provided	083 590 0271	female			
Agelina Ndyqlivane	Kutlwanong	Not provided	072 904 6765	female			

Date and Venue	Description of Consultation	Objective of the Consultation	Participant Name	Organisation	Email	Tel/Cell no.	Gender
			Nwabisa Skisazana	Kutlwanong	Not provided	079 984 0216	female
			Asive Minyelo	Komkhulu	Not provided	079 321 3272	female
			Malheko Tololo	Sakhuthe	Not provided	076 862 2501	female
			Nophumlani Komanisi	Kutlwanong	Not provided	069 506 3830	female
			Ntombosindiso Mfundisi	Sakhuthe	Not provided	063 062 4681	female
			Nobongile Duma	Sakhuthe	Not provided	Not provided	female
			Nosebenzile Cekiso	Mabalare	Not provided	076 839 6676	female
			Nosandla Mnisi	Mabalare	Not provided	063 048 2730	female
			Novotile Duna	Kuthaono	Not provided	071 313 9260	female
			Wenzile Giyose	SANPARKS	Wensilesiyose@sanparks.org	063 711 0561	female
			Kefuqe Lebatla	Komkhulu	Not provided	071 843 7660	female
3 September 2024, ERS Boardroom, Matatiele	Eastern Grasslands stakeholder engagement session	To understand what stakeholders are doing in the landscape and how this could be factored into the project design	Londiwe Dlamini	WWF	ldlamini@wwf.org.za	072 508 8954	female
			Debbie Newton	Conservation Outcomes	Djnewton27@gmail.com	082 825 8921	female
			Kiera Schoeman	Collective Impact	kiera@thecollective.import.com	063 684 4682	female
			Greg Martindale	Conservation Outcomes	greg@conservationoutcomes.org	082 804 4412	male
			Thabo Sithole	ERS	thabo@enviros.co.za	078 585 9348	male
			Nicky Mcleod	ERS	nicky@enviros.co.za	082 782 6067	female
			Wenzile Giyose	SANPARKS	wenzilegiyose@sanparks.org	063 711 0561	female
			Malizo Ntalo	MNA	malizo@meatnaturallyafrica.com	071 893 9056	male
			Tsumbedso Mudalenste	CSA	niltonm@conservation.org	082 605 0375	male
			Azisa Parker	Consultant team	trixieandi@gmail.com	084 455 9693	female
			Thembanani Nsibande	WWF-SA			male
			Dibuseng Leeu	Matatiele LM	dleeu@matatiele.gov.za	072 158 1090	female
			Sissie Matela	ERS	sissie@enviros.co.za	082 953 4857	female
			Sarah Frazee	Meat Naturally	sfrazee@meatnaturallyafrica.com	082 823 9785	female
			Amanda Kalaku	ERS	amanda@enviros.co.za	079 845 1530	female
			Babalwa Madubela	Not provided	12645044@myuwc.ac.za	082 478 0281	male
			Dean Ricketts	DEDEAT	Dean.rickett@dedeat.gov.za	060 532 4302	male
			Tsepo Lesholu	MEHLODING	Tsepoxxxx	073 921 2814	male
4 September 2024, Madlangala	Gender Assessment Eastern Grasslands	To understand the gender dynamics in the Eastern Grasslands MLL	Azisa Parker		trixieandi@gmail.com	084 455 9693	Female
			Miseka Nomkevu	Madlangala	Not provided	076 318 9168	Female

Date and Venue	Description of Consultation	Objective of the Consultation	Participant Name	Organisation	Email	Tel/Cell no.	Gender
		as well as possible project interventions to be included in Gender Action Plan	Nomvume Marareni	Madlangala	Not provided	082 051 2008	Female
			Thobeka Marareni	Madlangala	Not provided	071 187 6917	Female
			Nomakhwanazi Ndwandwa	Madlangala	conniendwandwa@gmail.com	071 564 6981	Female
			Nosiseko Madikane	Madlangala	Not provided	063 970 7409	Female
			Noxolo Siphambo	Madlangala	Not provided	079 227 3407	Female
			Nokuthalo Ntsizwa	Madlangala	Not provided	081 812 3243	Female
			Zanele Ratekane	Madlangala	Not provided	078 444 1979	Female
			Lungiswa Marareni	Madlangala	Not provided	076 368 9155	Female
			Noluthando Nonkeyu	Madlangala	nonkevunokuthando@gmail.com	082 600 4835	Female
			Nokwanele Tshetu	Madlangala	Not provided	072 395 0381	Female
			Nomajama Matias	Madlangala	Not provided	072 210 8021/ 078 414 1062	Female
5 September 2024, Mountain Zebra National Park	Mountain Zebra National Park stakeholder engagement	To understand what stakeholders are doing in the landscape and how this could be factored into the project design	Luzuko Mrwebi	SANPARKS	Mrwebilizuko400@gmail.com	072 263 9781	Female
			Sbusisiwe Xulu	SANPARKS	Busi.xulu@sanparks.org	082 082 9088	Female
			Bulela Kula	SANPARKS	Not provided	063 280 8374	Female
			Hombisa Nokele	SANPARKS(BSP)	Hombisanokele84@gmail.com	083 484 6575	Female
			Elmine Blaauw	SANPARKS(BSP)	Elmineblaauw15@gmail.com	081 315 7790	Female
			Noxolo Bontsi	SANPARKS(BSP)	bontsinoxolo@gmail.com	073 225 7830	Female
			Evans Mkansi	SANPARKS(Admin)	Evans.mkansi@sanparks.org	072 077 4934	Male
			Sinclair Collett	S.Honorary Ranger	collettsn@gmail.com	081 374 3657	Male
			Cronje Dirk	S.Honorary Ranger	dfcronje@gmail.com	082 874 0018	Male
			Azisa Parker	Design Consultant	trixieandi@gmail.com	084 455 9693	Female
			Brendan Kingwill	Private	brendantcfarming@gmail.com	066 236 4918	Male
			Izak van Heerden	Private	Zako225@gmail.com	083 389 1715	Male
			Noxolo Twani	SANPARKS	twaninoxolo@gmail.com	083 353 0645	Female
			Roxanne Plaatjies	SANPARKS(BSP)	Xenna.plaatjies@sanparks.org	066 146 3360	Female
			Wonga Pama	SANPARKS	Wonga.pama@sanparks.org	065 896 8113	Male
Sindiswa Bobelo	Bobelo Construction	Bobelo.construction@gmail.com	073 165 0035	Female			

Date and Venue	Description of Consultation	Objective of the Consultation	Participant Name	Organisation	Email	Tel/Cell no.	Gender
			Sally Latola	Victory is ours	Sallylatola15@gmail.com	078 604 9180	Female
5 September 2024, Mountain Zebra National Park	Gender Assessment Greater Addo - Women Contractors	To understand the gender dynamics in the Greater Addo MLL as well as possible project interventions to be included in Gender Action Plan	Sbusisiwe Xulu	Lingelihle Cradock	Busi.xulu@sanparks.org	082 082 9088	Female
			Elmine Blaauw	Michausdal Cradock	Elmineblaauw15@gmail.com	081 315 7790	Female
			Roxanne Plaatjies	Michausdal Cradock	Xenna.plaatjies@sanparks.org	066 146 3360	Female
			Sally Latola	Michausdal Cradock Contractor	Sallylatola15@gmail.com	078 604 9180	Female
			Noxolo Twani	Lingelihle	twaninoxolo@gmail.com	Not provided	Female
			Luzuko Mruebi	KWT	Mruebiluzuko4@gmail.com	Not provided	Female
			Busisa Kula	Lingelihle		068 280 8374	Female
			Sindiswa Bobelo	Lingelihle - Bobelo Construction	Bobelo.construction@gmail.com	073 165 0038	Female
			Noxolo Bontsi	SANPARKS	bontsinoxolo@gmail.com	073 225 7830	Female
			Azisa Parker		trixieandi@gmail.com	084 455 9693	Female
6 September 2024, Golf club, Pearston	Youth at cultural connections, Pearston	To understand the gender dynamics in the Greater Addo MLL as well as possible project interventions to be included in Gender Action Plan	Mukaya Witbooi	1891 Barcelona Street		081 803 9366	Female
			Ludelia Swartz	5 Buitekant Street (Town)		064 663 2597	Female
			Brandon Strydom	30 Kudu Street		066 359 6204	Male
			Catty Swanepoel	Voortrekker Street (Town)		082 419 4271	Female
			Bridget Van Rhyner	3C Potgieter Street		084 767 1521	Female
			Esmerelda Witbooi	1897 Barcelona Street		074 537 9827	female
			Moeshray Harkie	8 Berg Street		076 749 6199	Male
			Lilitha Ngcuka	1765 Yamampela		074 240 2329	Female
			Mpumezo	7A Berg Street		078 715 5548	Male
			Dylan Karools	22D Kingfisher Street		072 061 0607	Male
			Azisa Parker		084 455 9396	Female	
6 September 2024, Nursery, Hive ecosystem	Women's group Hive Ecosystems	To understand the gender dynamics in the Greater Addo MLL as well as possible project interventions to be included in Gender Action Plan	Azisa Parker			084 455 9693	Female
			Sonia Latola	Spekleaf Eco Planters		073 135 2763	Female
			Roseline Hector	Spekleaf Eco Planters		067 533 6923	Female
			Elize Fisant	Spekleaf Eco Planters		063 782 9271	Female
			Marlene Speelman	Spekleaf Eco Planters		067 437 2808	Female
			Karen Milne	Hive Ecosystem	Karenmilne22@gmail.com	083 387 3137	Female
			Mary-Ann Jansen	Hive Ecosystem		060 733 6995	Female
			Kristal Maze	SANPARKS	Kristal.Maze@sanparks.org		Female

Date and Venue	Description of Consultation	Objective of the Consultation	Participant Name	Organisation	Email	Tel/Cell no.	Gender
16 to 19 September 2024, !Kwa Ttu	Detailed Project Design Workshop	To discuss project design progress in preparation for the stakeholder engagement workshop on 2 October 2024	Natasha Wilson	SANParks	natasha.wilson@sanparks.org		Female
			Debbie Newton	Capabilities Consultant	Djnewton27@gmail.com	0828258921	Female
			Lala Steyn	Lead Consultant	lala@steynadvisory.co.za	0834178563	Female
			Alvin Ngugi	Finance Consult	alvin@kedari.co.za	0736251215	Male
			Kevin McCann	Cons outcomes	kevin@conservation-outcomes.org	0834470657	Male
			Candice Eb	SANParks	candice.eb@sanparks.org	083 354 0284	female
			Greg Martindale	Cons Outcomes	greg@conservation-outcomes.org		Male
			Azisa Parker	Independent	trixieandi@gmail.com	0844559693	Female
02 October 2024, Southern Sun, OR Tambo International Airport	GEF 8 and GBFF Mega Living Landscape design workshop	To present what the MLL Program, comprised of the GEF8 and GBFF projects, will do and how the objectives will be achieved.	Kiera Schoeman	Collective Impact	kiera@thecollective-impact.com	0636844682	Female
			Aimee Ginsburg	SANBI	A.Ginsburg@sanbi.org.za	073 446 7567	Female
			Alvin Ngugi	Design team	Alvin@kedari.co.za	073 625 1215	Male
			Angus Burns	WWF-SA	aburns@wwf.org.za	084 400 1234	Male
			Aruna Seepersadh	DFFE	aseepersadh@dffe.gov.za	082 399 9529	Female
			Ayaka Peters	SANBI	A.Peter@sanbi.org.za	071 879 3393	Female
			Azisa Parker	Design team	trixiandi@gmail.com	084 455 9693	Female
			Brian Morris	MTPA	brian@mtpa.co.za	084 579 7979	Male
			Candice Eb	SANParks	Candice.eb@sanparks.org	083 354 0284	Female
			Chris De Bruno Austin	Not provided	Chris.austin@kishugu.com	Not provided	Male
			Daniel Jooste	Nedbank	daniel@nedbank.co.za	082 829 7381	Male
			Debbie Newton	Design team	Djnewton27@gmail.com	082 825 8721	Female
			Deon Nel	WWF-SA	dnel@wwf.org.za	076 867 8119	Male
			Edward Nemukula	DFFE	ENemukula@dffe.gov.za		Male
			Eleanor van den Berg-McGregor	ECPTA	eleanor.vandenberg-mcgregor@ecpta.co.za	066 4804 1442	Female
			Greg Martindale	Design team	greg@conservation-outcomes.org	082 804 4412	Male
			Hapiloe Sello	SANPARKS	Hapiloe.sello@sanparks.org	078 459 5845	Female
			Howard Hendricks	SANParks	howard.hendriks@sanparks.org		Male
			John Hurter	WRSAs	john@wildsummitgroup.com		Male
			Justine Ganess	CSA	jganess@conservation.org	078 187 5058	Female
Kerry Purnell	TNC	kerry.purnell@tnc.org					
Kevin McCann	Design team	kevin@conservation-outcomes.org	083 442 0657	Male			
Kiera Schoeman	Design team	kiera@thecollective-impact.com	063 684 4682	Female			
Kristal Maze	SANParks	Kristal.maze@sanparks.org		female			
Mandaha Tshifhwa	SANBI	T.mandaha@sanbi.org.za	079 628 1996	Female			

Date and Venue	Description of Consultation	Objective of the Consultation	Participant Name	Organisation	Email	Tel/Cell no.	Gender
			Melusi Baloyi	KEDARI	melusia@kedari.co.za	066 262 4085	Male
			Mpho Gumula	SANBI	mgumula@sanbi.org.za	082 630 9079	Female
			Ngcali Nomtshongwana	SANParks	ngcalinomtshongwane@sanparks.org	082 319 9260	Male
			Nicky McCleod	ERS	nicky@enviros.co.za	082 782 6067	Female
			Nico Oosthuizen	EPW	nico@mountainlands.co.za	082 557 1659	Male
			Nokuthula Mhene	UNDP	nokutula.mhene@undp.org	076 018 4217	
			Norman Johnson	SANParks	Norman.Johnson@sanparks.org		
			Ntwanano Mendes	SANBI	N.mendes@sanbi.org.za	081 728 9158	
			Paul Merifield	MZCPE	paul.m@x6c.co.za	082 379 6162	
			Pearl Tladi Ramaboya	SANParks	pearl.ramaboya@sanparks.org	076 245 3068	Female
			Rhian Berning	Eden to Addo	rhian@edentoaddo.co.za	073 232 5169	Female
			Sissie Matela	ERS	sissie@enviros.co.za	082 953 4857	Female
			Skumsa Ntshanga	SANParks	Skumsa.ntshanga@sanparks.org	082 413 0166	Female
			Ulrich Schutte	MZCPE	projectmanager@mzcpe.co.za	066 238 6264	Male
			Wenzile Giyose	SANParks	Wenzile.Giyose@sanparks.org	063 711 0561	Female
3 October 2024	SANParks Executive oversight committee	Update of progress made with design of the GEF 8 and GBFF projects; obtain SANParks executive oversight team approval on draft project design and timelines for Board engagement.	Howard Hendricks	SANParks	howard.hendriks@sanparks.org		Male
Online			Kethiwe Silubane	SANPARKS	khethiwe.silubane@sanparks.org	0795074666	female
			Lize McCourt	SANPARKS	lize.mccourt@sanparks.org	0825640401	female
			Kristal Maze	SANParks	Kristal.maze@sanparks.org		female
15 October 2024 online	Gender analysis	To understand women's experiences of working in the sector	Azisa Parker	Consultant team	trixieandi@gmail.com		female
			Natasha Wilson	SANParks	Natasha.wilson@sanparks.org		female
15 October 2024 online	Gender analysis	To understand women's experiences of working in the sector	Azisa Parker	Consultant team	trixieandi@gmail.com		female
			Nompendulo Mgwali	WWF-SA	nmgwali@wwf.org.za		female
16 October 2024 online	Gender analysis	To understand women's experiences of working in the sector	Azisa Parker	Consultant team	trixieandi@gmail.com		female
			Danielle du Toit	EWT		0665384650	female
	Gender analysis		Azisa parker	Consultant team	trixieandi@gmail.com		female

Date and Venue	Description of Consultation	Objective of the Consultation	Participant Name	Organisation	Email	Tel/Cell no.	Gender
16 October 2024 online		To understand women's experiences of working in the sector	Wenzile Giyosi	SANparks	Wenzile.Giyose@sanparks.org	063 711 0561	Female
18 October 2024 online	Gender analysis	To understand women's experiences of working in the sector	Azisa Parker	Consultant team	trixieandi@gmail.com		female
			Amanda Kalaku	ERS	amanda@enviros.co.za		female
18 October 2024 online	Gender analysis	To understand women's experiences of working in the sector	Azisa Parker	Consultant team	trixieandi@gmail.com		female
			Phunyuzwa Xhegwana	SANParks	phunyuzwa.xhegwana@sanparks.org		Female
18 October 2024	Addo: Indigenous Peoples discussions	To understand if there are any IP communities in Addo	Azisa parker	Consultant team	trixieandi@gmail.com		female
			Annie	Community leader in Springbokvlakte		0769076021	female
21 October	Addo: Indigenous Peoples discussions	To understand if there are any IP communities in Addo	Azisa Parker	Consultant team	trixieandi@gmail.com		female
			Chief Dominic Kok	KhoiSan Chief		0744728454	male
22 October 2024	Addo: Indigenous Peoples discussions	To understand if there are any IP communities in Addo	Azisa Parker	Consultant team	trixieandi@gmail.com		female
			Paramount Chief Edmund Stuurman	KhoiSan Paramount Chief		0761296280	Male